

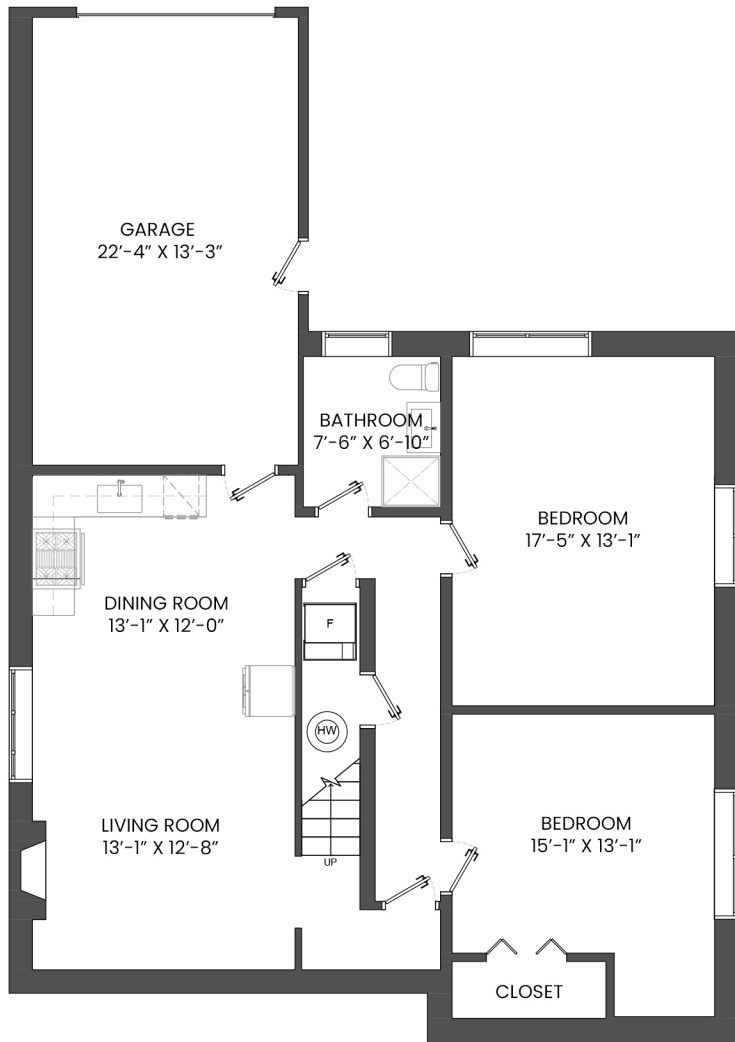
7477 VIVIAN DRIVE, VANCOUVER, BC

LOWER FLOOR TOTAL: 1,243 SQ.FT.

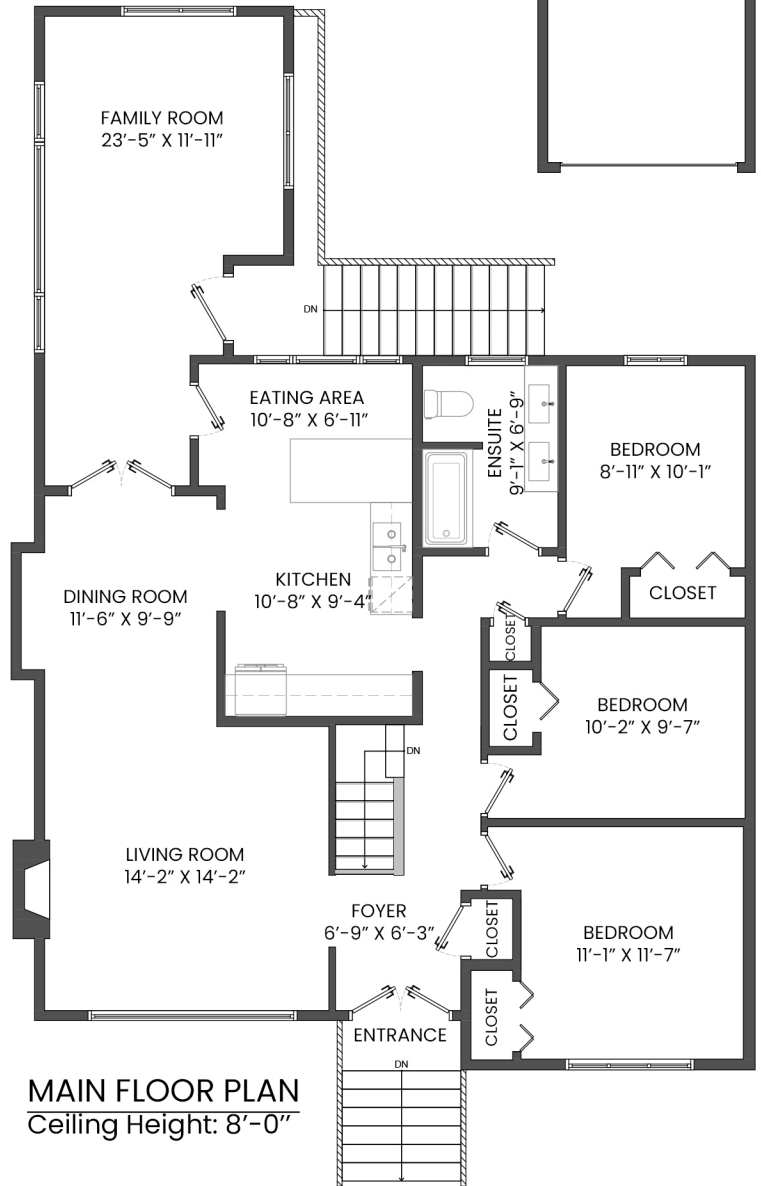
MAIN FLOOR TOTAL: 1,479 SQ.FT.

TOTAL: 2,722 SQ.FT.

GARAGE: 539 SQ. FT.



LOWER FLOOR PLAN
Ceiling Height: 8'-0"



MAIN FLOOR PLAN
Ceiling Height: 8'-0"

