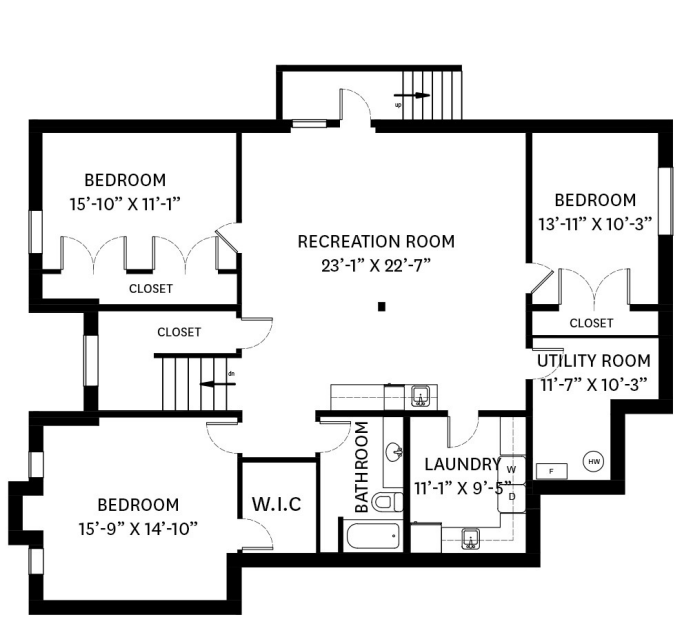


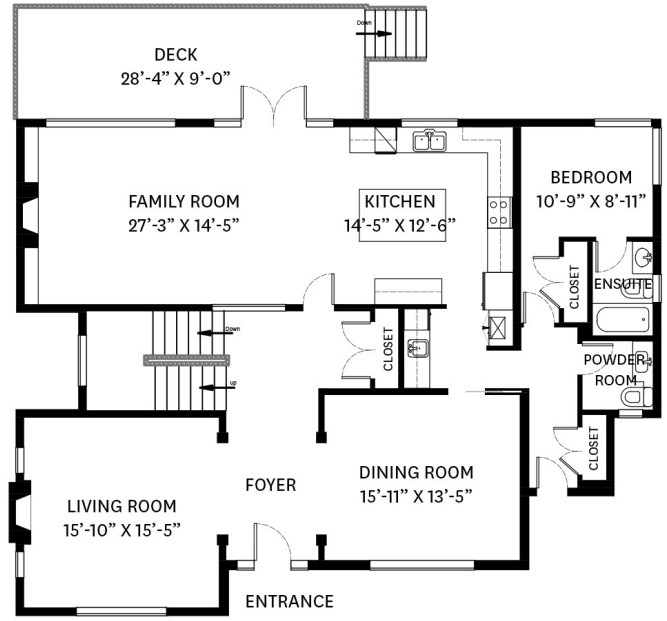
551 SAVILLE CRESCENT, NORTH VANCOUVER, BC

LOWER FLOOR TOTAL: 1,810 SQ.FT. GARAGE: 409 SQ. FT.
 MAIN FLOOR TOTAL: 1,862 SQ.FT. BALCONY: 71 SQ. FT.
 UPPER FLOOR TOTAL: 1,174 SQ.FT. DECK: 256 SQ.FT.
TOTAL: 4,846 SQ.FT.*

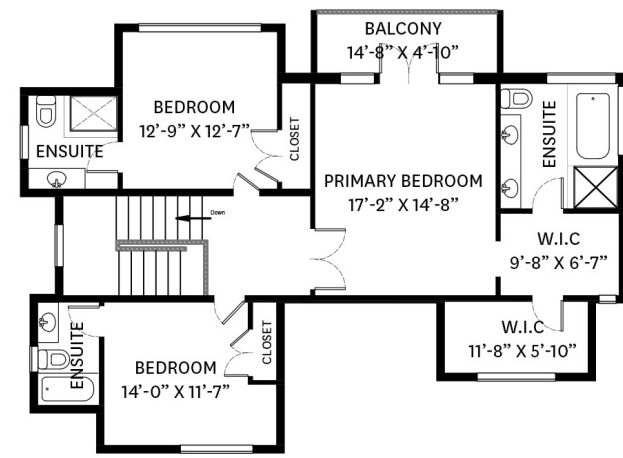
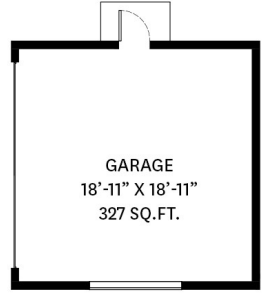
*DISCLAIMER: BC ASSESSMENT SHOWS 4,814 SQ.FT.



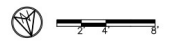
LOWER FLOOR PLAN
 Ceiling Height: 7'-10"



MAIN FLOOR PLAN
 Ceiling Height: 9'-11"



UPPER FLOOR PLAN
 Ceiling Height: 8'-0"



floor plan designed by
 ishot.ca Enterprises Inc.
 604-368-7979
<http://ishot.ca>



Salina Kai PREC*
 604.773.7013
skai@rennie.com
rennie.com/salinakai

Derek Kai PREC*
 604.868.1666
dkai@rennie.com
expertliving.ca

*PERSONAL REAL ESTATE CORPORATION. THE FLOOR PLAN ILLUSTRATION IS NOT SUITABLE FOR CONSTRUCTION/ARCHITECTURAL PURPOSES. MEASUREMENTS ARE APPROXIMATE AND MAY NOT BE TO SCALE. E&O INSURED.