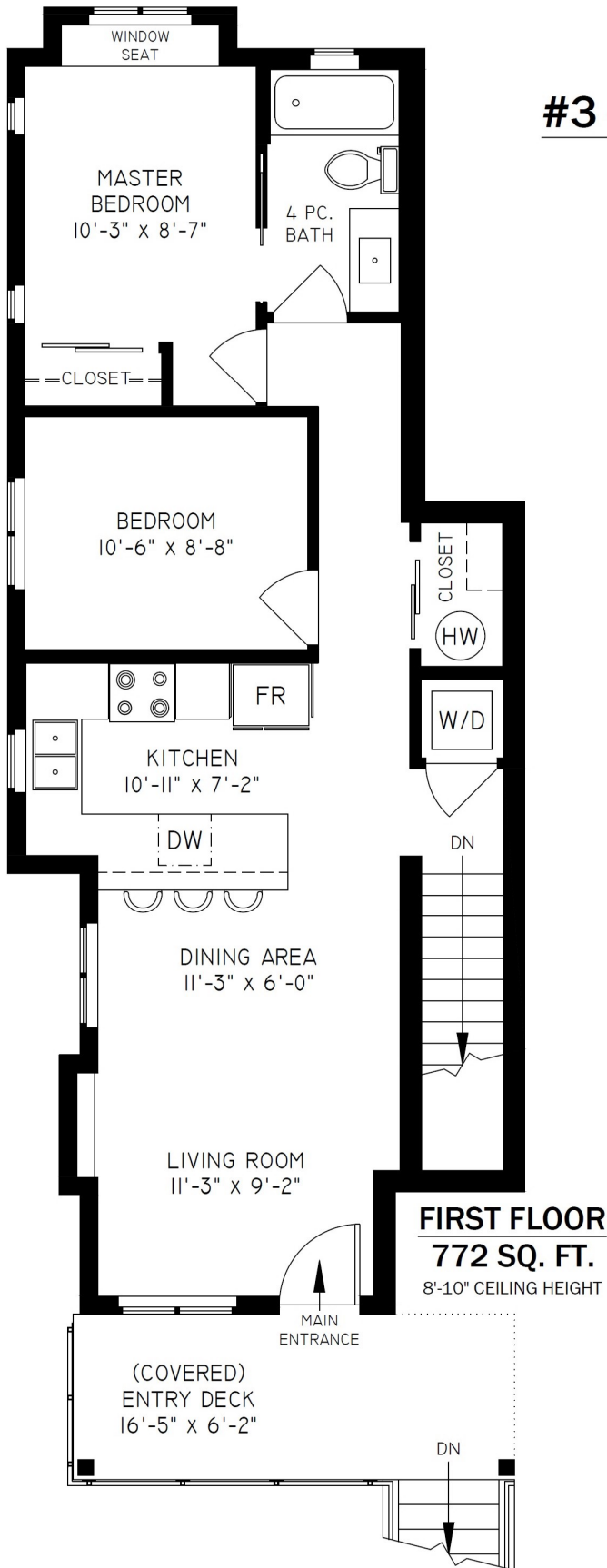


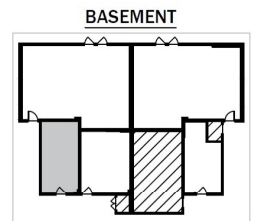
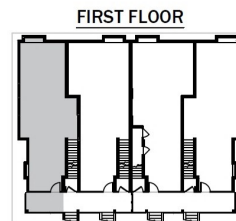
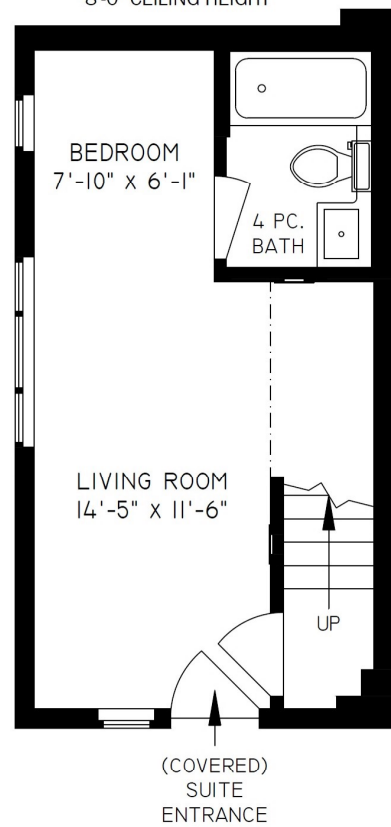
#3 - 2717 HORLEY STREET VANCOUVER 1064 SQ. FT.

8'-0" - 8'-10" CEILING HEIGHTS



BASEMENT 292 SQ. FT.

8'-0" CEILING HEIGHT



FLOOR	AREA (SQ. FT.)	
	FINISHED	DECK
FIRST	772	72
BASEMENT	292	-
TOTAL	1064	72



THE REPRESENTED FLOOR PLANS ARE NOT SUITABLE FOR CONSTRUCTION/ARCHITECTURAL PURPOSES. EVERY EFFORT HAS BEEN MADE TO REPRESENT ALL DIMENSION ACCURATELY. E&O INSURED.

