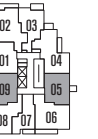
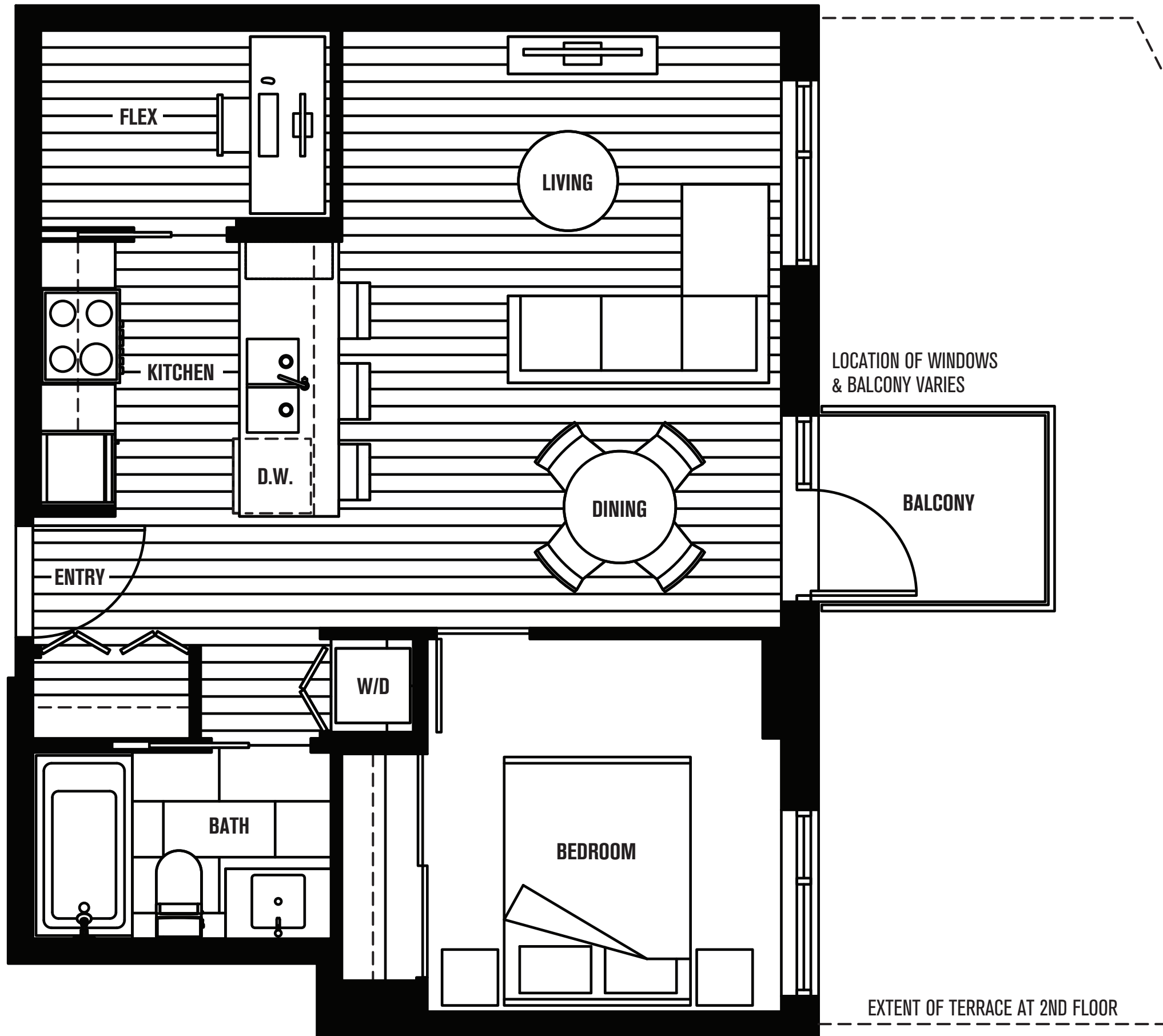


# theRaymur

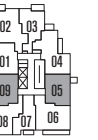
@ Strathcona Village

**PLAN B1**  
1 BEDROOM + FLEX  
551 - 552 SQ FT



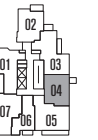
HASTINGS ST.

**10TH FLOOR**  
ALSO AVAILABLE ON LEVELS 8 & 12  
(L8: 804 & 808)



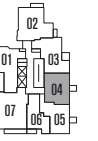
HASTINGS ST.

**9TH FLOOR**  
ALSO AVAILABLE ON LEVELS 11 & PH



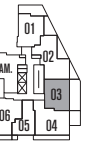
HASTINGS ST.

**5TH FLOOR**  
ALSO AVAILABLE ON LEVEL 7



HASTINGS ST.

**3RD FLOOR**  
ALSO AVAILABLE ON LEVEL 6



HASTINGS ST.

**2ND FLOOR**