

# FOR SALE & for living

STRATHCONA VILLAGE  
#901 - 933 E Hastings Street  
Vancouver



## #901 - 933 E Hastings Street, Vancouver

Vancouver is at your doorstep at **THE SOLD OUT** Strathcona Village with Downtown, Gastown, Chinatown, East Village and Commercial Drive within walking distance. This bright West facing 1 bedroom + Flex offers a fantastic floorplan with plenty of windows, balcony and gorgeous views of the city/water and Northshore Mountains. Strathcona Village homes is designed by award-winning gBL Architects. With airy living spaces, slick kitchens, spa-like bathrooms and spacious outdoor patios and decks, owning at Strathcona is smart & easy. Amenities include: fitness centers meeting rooms, caretakers, EV charging, bike lockers, and lush rooftop gardens. 1 parking. Assignment of Contract. Completion estimated Fall of 2017.

### INFORMATION YOU NEED TO KNOW:

PRICE	\$424,900
ADDRESS	#901 - 933 E Hastings Street
AREA	Strathcona
TYPE	1 Bedroom + Flex + Balcony
BATHS	1
SQ FT	546
STRATA FEES	\$242.24
PARKING	1
STORAGE	Insuite
YEAR BUILT	2017
VIEW	West
PETS	Yes
RENTALS	Yes
ORIGINAL PRICE	\$299,900 (\$44,985 Deposit)
CREDITS	\$3,999

### INFORMATION YOU *want* TO KNOW:



Transit

0.2 km



Nearest Park  
Maclean Park



Schools nearby:  
Admiral Seymour



Coffee shops within 1 km:  
10+



**DEREK KAI** \*PREC

604.868.1666 · dkai@rennie.com

Expertliving.ca

**SUSAN CHOW** \*PREC

604.765.8269 · schow@rennie.com

Expertliving.ca

rennie.com

**RENNIE**  
&  
ASSOCIATES  
REALTY

# Strathcona Village



## FEATURES



## AFFORDABLE HOME OWNERSHIP IN HISTORIC STRATHCONA

DESIGNED TO MEET LEED® SILVER STANDARDS BY VANCOUVER'S OWN GBL ARCHITECTS WITH INNOVATIVE, QUALITY CONSTRUCTION. TWO DELUXE COLOUR SCHEMES BY AWARD-WINNING BYU DESIGN, ONE IN LIGHT WOOD TONES AND ANOTHER IN GLOSSY WHITES WITH CHARCOAL ACCENTS.

### INSPIRED DESIGN

- The harbour container design of the building's facade with its extensive glazing, colourful metal panels, exterior balconies and amenity spaces was inspired by the neighbouring industrial aesthetic
- Expansive floor-to-ceiling windows let in an abundance of natural light and maximize opportunities to enjoy the spectacular views
- Efficient open layouts and spacious living spaces
- Textured laminate-wood flooring throughout enhances the luxury industrial aesthetic
- Convenient combo USB and electrical outlet plugs in the kitchens
- Water-efficient and eco-friendly landscaping and green roof reduces carbon footprint

### SLICK KITCHENS

- Customize your cooking and bath space with one of two colour schemes: light wood tones with neutral finishings or glossy whites with charcoal accents
- Stainless steel GE Moffat refrigerator for a seamless culinary experience
- Panasonic Inverter microwave
- Luxurious, durable quartz-composite stone counters and backsplash
- Sleek stainless steel GE electric range
- Stainless steel Frigidaire Gallery dishwasher
- Designer American Standard faucet with pull down feature
- Stainless steel Sonetto double sink
- Under-cabinet pot lighting that makes your entire kitchen sparkle
- Convenient open-style shelving

### SPA-LIKE BATHROOMS

- Beautiful quartz-composite stone counters
- Deluxe custom vanity with extra storage drawers
- Contemporary soaker tub with sleek and lasting finish
- Stunning glass shower
- Rowan high-efficiency dual-flush toilet by TOTO
- Ultra-modern American Standard water-efficient shower head and faucets
- Chelini under mount rectangular basins
- High-efficiency Whirlpool stacking washer and dryer

### CONTEMPORARY CONVENIENCES

- Meeting rooms and fully equipped Fitness Centre
- Multiple outdoor landscaped spaces for entertaining, gathering, reading, or relaxing around a stunning patio gas-fire bowl
- Secure underground parking and restricted floor access
- Charging stations for electric vehicles
- Walking distance to restaurants, cafes, bars, breweries, and shopping

### UNIQUELY POSITIONED

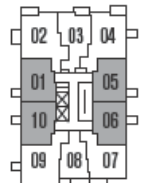
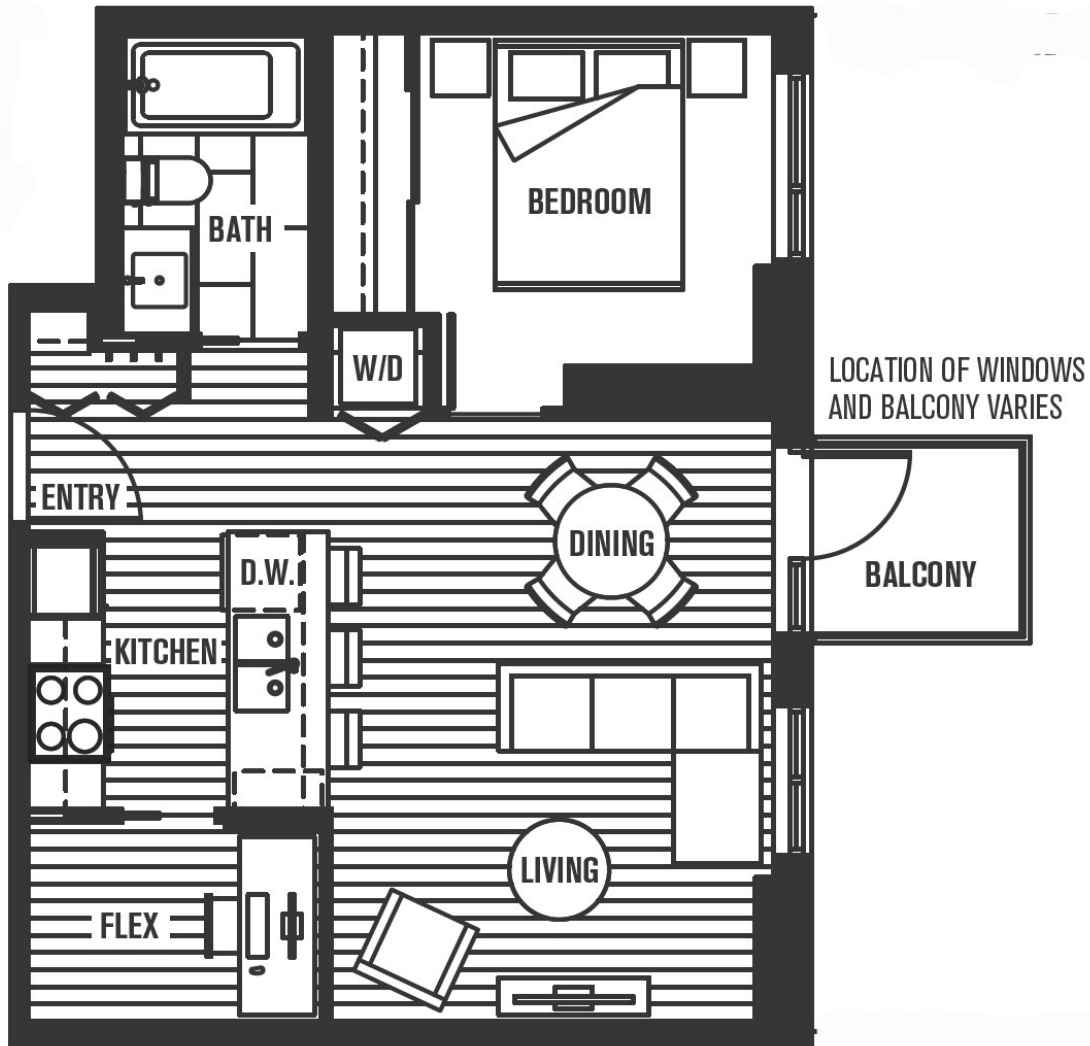
- Stunning views of the North Shore Mountains, Burrard Inlet, Downtown, and Port Metro Vancouver
- Walking distance to Downtown, Gastown, Chinatown, East Village and Commercial Drive
- The new 12,000 square foot Strathcona Public Library is less than two blocks away
- Easy access to transit, bike paths, the SeaBus, SkyTrain, Canada Line, and Highway 1

### PROTECTED BY NATIONAL HOME WARRANTY

**PLAN B**

1 BEDROOM + FLEX

546 SQ FT



HASTINGS ST.

9TH FLOOR

