

FOR SALE & for living

STRATHCONA VILLAGE
#801 - 983 East Hastings
Vancouver



#801 - 983 East Hastings, Vancouver

Vancouver is at your doorstep at **THE SOLD OUT** Strathcona Village with Downtown, Gastown, Chinatown, East Village and Commercial Drive within walking distance. **THE MOST SOUGHT AFTER UNIT AT STRATHCONA VILLAGE:** Northwest corner 2 Bedroom 2 Bathroom with **UNOBSTRUCTED** view of the water with the Northshore mountains behind. This is the original display suite home with a fantastic floorplan, plenty of windows, separated bedrooms and a bonus 2 balconies! Strathcona Village homes is designed by award-winning gBL Architects. With airy living spaces, slick kitchens, spa-like bathrooms and spacious outdoor patios and decks, owning at Strathcona is smart & easy. Amenities include: fitness centers meeting rooms, caretakers, EV charging, bike lockers, and lush rooftop gardens. Home comes with 2 parking stalls (2nd stall is an additional \$25,000 as per contract) and a storage locker included. Assignment of Con-

INFORMATION YOU NEED TO KNOW:

PRICE	\$649,900
ADDRESS	#801 - 983 East Hastings, Vancouver
AREA	Strathcona
TYPE	2 Bedroom + 2 Balconies
BATHS	2
SQ FT	775
STRATA FEES	\$341.98
PARKING	2
STORAGE	Underground Locker
YEAR BUILT	2017
VIEW	Northwest
PETS	Yes
RENTALS	Yes
ORIGINAL PRICE	\$449,900 (\$89,980 Deposit)
CREDITS	\$7,499.00

INFORMATION YOU **want** TO KNOW:



Transit

0.2 km



Nearest Park
Maclean Park



Schools nearby:
Admiral Seymour



Coffee shops within 1 km:
10+



DEREK KAI *PREC

604.868.1666 · dkai@rennie.com

Expertliving.ca

SUSAN CHOW *PREC

604.765.8269 · schow@rennie.com

Expertliving.ca

rennie.com

RENNIE
&
ASSOCIATES
REALTY

Strathcona Village



FEATURES



AFFORDABLE HOME OWNERSHIP IN HISTORIC STRATHCONA

DESIGNED TO MEET LEED® SILVER STANDARDS BY VANCOUVER'S OWN GBL ARCHITECTS WITH INNOVATIVE, QUALITY CONSTRUCTION. TWO DELUXE COLOUR SCHEMES BY AWARD-WINNING BYU DESIGN, ONE IN LIGHT WOOD TONES AND ANOTHER IN GLOSSY WHITES WITH CHARCOAL ACCENTS.

INSPIRED DESIGN

- The harbour container design of the building's facade with its extensive glazing, colourful metal panels, exterior balconies and amenity spaces was inspired by the neighbouring industrial aesthetic
- Expansive floor-to-ceiling windows let in an abundance of natural light and maximize opportunities to enjoy the spectacular views
- Efficient open layouts and spacious living spaces
- Textured laminate-wood flooring throughout enhances the luxury industrial aesthetic
- Convenient combo USB and electrical outlet plugs in the kitchens
- Water-efficient and eco-friendly landscaping and green roof reduces carbon footprint

SLICK KITCHENS

- Customize your cooking and bath space with one of two colour schemes: light wood tones with neutral finishings or glossy whites with charcoal accents
- Stainless steel GE Moffat refrigerator for a seamless culinary experience
- Panasonic Inverter microwave
- Luxurious, durable quartz-composite stone counters and backsplash
- Sleek stainless steel GE electric range
- Stainless steel Frigidaire Gallery dishwasher
- Designer American Standard faucet with pull down feature
- Stainless steel Sonetto double sink
- Under-cabinet pot lighting that makes your entire kitchen sparkle
- Convenient open-style shelving

SPA-LIKE BATHROOMS

- Beautiful quartz-composite stone counters
- Deluxe custom vanity with extra storage drawers
- Contemporary soaker tub with sleek and lasting finish
- Stunning glass shower
- Rowan high-efficiency dual-flush toilet by TOTO
- Ultra-modern American Standard water-efficient shower head and faucets
- Chelini under mount rectangular basins
- High-efficiency Whirlpool stacking washer and dryer

CONTEMPORARY CONVENIENCES

- Meeting rooms and fully equipped Fitness Centre
- Multiple outdoor landscaped spaces for entertaining, gathering, reading, or relaxing around a stunning patio gas-fire bowl
- Secure underground parking and restricted floor access
- Charging stations for electric vehicles
- Walking distance to restaurants, cafes, bars, breweries, and shopping

UNIQUELY POSITIONED

- Stunning views of the North Shore Mountains, Burrard Inlet, Downtown, and Port Metro Vancouver
- Walking distance to Downtown, Gastown, Chinatown, East Village and Commercial Drive
- The new 12,000 square foot Strathcona Public Library is less than two blocks away
- Easy access to transit, bike paths, the SeaBus, SkyTrain, Canada Line, and Highway 1

PROTECTED BY NATIONAL HOME WARRANTY

theRaymur

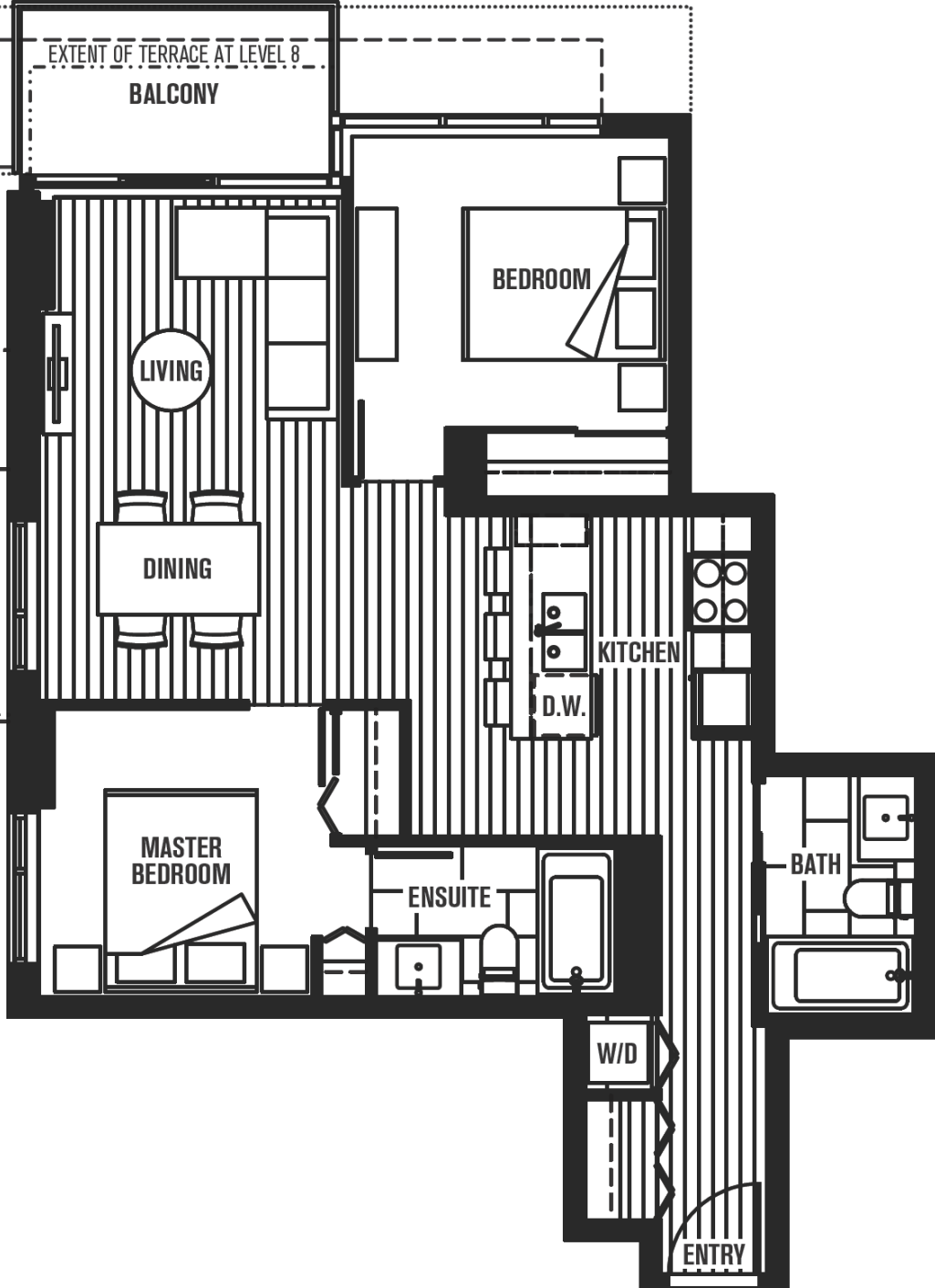
@ Strathcona Village

PLAN Z

2 BEDROOM

775 SQ FT

EXTENT OF BALCONY VARIES - NOTE STEP-UP AT LEVELS 10 & 12



EXTENT OF TERRACE AT LEVEL 8

BALCONY

BEDROOM

LIVING

DINING

KITCHEN

D.W.

MASTER
BEDROOM

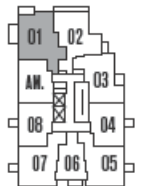
ENSUITE

BATH

W/D

ENTRY

EXTENT OF TERRACE VARIES
WHERE APPLICABLE
DUE TO STEP-UP AT LEVELS 10 & PH



HASTINGS ST.

8TH FLOOR



NORTH