

# FOR SALE & for living

STRATHCONA VILLAGE  
#507- 983 E Hastings Street  
Vancouver



## #507 - 983 E Hastings Street, Vancouver

Vancouver is at your doorstep at THE SOLD OUT Strathcona Village with Downtown, Gastown, Chinatown, East Village and Commercial Drive within walking distance. This bright Southwest facing 2 Bedroom offers a fantastic floorplan with plenty of windows, balcony, and city views. Chefs will love the open gourmet kitchen with a stainless steel appliance package and Sonetto double sink. Relax in the spa like bath with contemporary soaker tub and quartz-composite stone counter vanity. Amenities include landscaped rooftop gardens, meeting rooms and fitness center. Walk to the upcoming 12,000 Strathcona Public library, Commercial Drive, Chinatown, East Village and Downtown. Includes 1 parking stall and a locker. Extra large decorating allowance. Call today for more information on this assignment. Completion Spring 2018.

### INFORMATION YOU NEED TO KNOW:

PRICE	\$749,900
ADDRESS	#507 - 983 E Hastings Street
AREA	Strathcona
TYPE	2 Bedroom + Balcony
BATHS	1
SQ FT	755
STRATA FEES	\$332.48
PARKING	1
STORAGE	Yes - Underground
YEAR BUILT	2018
VIEW	Southwest
PETS	Yes - 1 Dog or 2 Cats or 1 of Each
RENTALS	Yes
ORIGINAL PRICE	\$374,900 (\$18,745 Deposit)
CREDITS	\$8,998

### INFORMATION YOU *want* TO KNOW:



Transit

0.2 km



Nearest Park  
Maclean Park



Schools nearby:  
Admiral Seymour



Coffee shops within 1 km:  
10+



**DEREK KAI** \*PREC

604.868.1666 · dkai@rennie.com

Expertliving.ca

**SUSAN CHOW** \*PREC

604.765.8269 · schow@rennie.com

Expertliving.ca

rennie.com

**RENNIE**  
&  
ASSOCIATES  
REALTY

# Strathcona Village



## FEATURES



### AFFORDABLE HOME OWNERSHIP IN HISTORIC STRATHCONA

DESIGNED TO MEET LEED® SILVER STANDARDS BY VANCOUVER'S OWN GBL ARCHITECTS WITH INNOVATIVE, QUALITY CONSTRUCTION. TWO DELUXE COLOUR SCHEMES BY AWARD-WINNING BYU DESIGN, ONE IN LIGHT WOOD TONES AND ANOTHER IN GLOSSY WHITES WITH CHARCOAL ACCENTS.

#### INSPIRED DESIGN

- The harbour container design of the building's facade with its extensive glazing, colourful metal panels, exterior balconies and amenity spaces was inspired by the neighbouring industrial aesthetic
- Expansive floor-to-ceiling windows let in an abundance of natural light and maximize opportunities to enjoy the spectacular views
- Efficient open layouts and spacious living spaces
- Textured laminate-wood flooring throughout enhances the luxury industrial aesthetic
- Convenient combo USB and electrical outlet plugs in the kitchens
- Water-efficient and eco-friendly landscaping and green roof reduces carbon footprint

#### SLICK KITCHENS

- Customize your cooking and bath space with one of two colour schemes: light wood tones with neutral finishings or glossy whites with charcoal accents
- Stainless steel GE Moffat refrigerator for a seamless culinary experience
- Panasonic Inverter microwave
- Luxurious, durable quartz-composite stone counters and backsplash
- Sleek stainless steel GE electric range
- Stainless steel Frigidaire Gallery dishwasher
- Designer American Standard faucet with pull down feature
- Stainless steel Sonetto double sink
- Under-cabinet pot lighting that makes your entire kitchen sparkle
- Convenient open-style shelving

#### SPA-LIKE BATHROOMS

- Beautiful quartz-composite stone counters
- Deluxe custom vanity with extra storage drawers
- Contemporary soaker tub with sleek and lasting finish
- Stunning glass shower
- Rowan high-efficiency dual-flush toilet by TOTO
- Ultra-modern American Standard water-efficient shower head and faucets
- Chelini under mount rectangular basins
- High-efficiency Whirlpool stacking washer and dryer

#### CONTEMPORARY CONVENIENCES

- Meeting rooms and fully equipped Fitness Centre
- Multiple outdoor landscaped spaces for entertaining, gathering, reading, or relaxing around a stunning patio gas-fire bowl
- Secure underground parking and restricted floor access
- Charging stations for electric vehicles
- Walking distance to restaurants, cafes, bars, breweries, and shopping

#### UNIQUELY POSITIONED

- Stunning views of the North Shore Mountains, Burrard Inlet, Downtown, and Port Metro Vancouver
- Walking distance to Downtown, Gastown, Chinatown, East Village and Commercial Drive
- The new 12,000 square foot Strathcona Public Library is less than two blocks away
- Easy access to transit, bike paths, the SeaBus, SkyTrain, Canada Line, and Highway 1

#### PROTECTED BY NATIONAL HOME WARRANTY

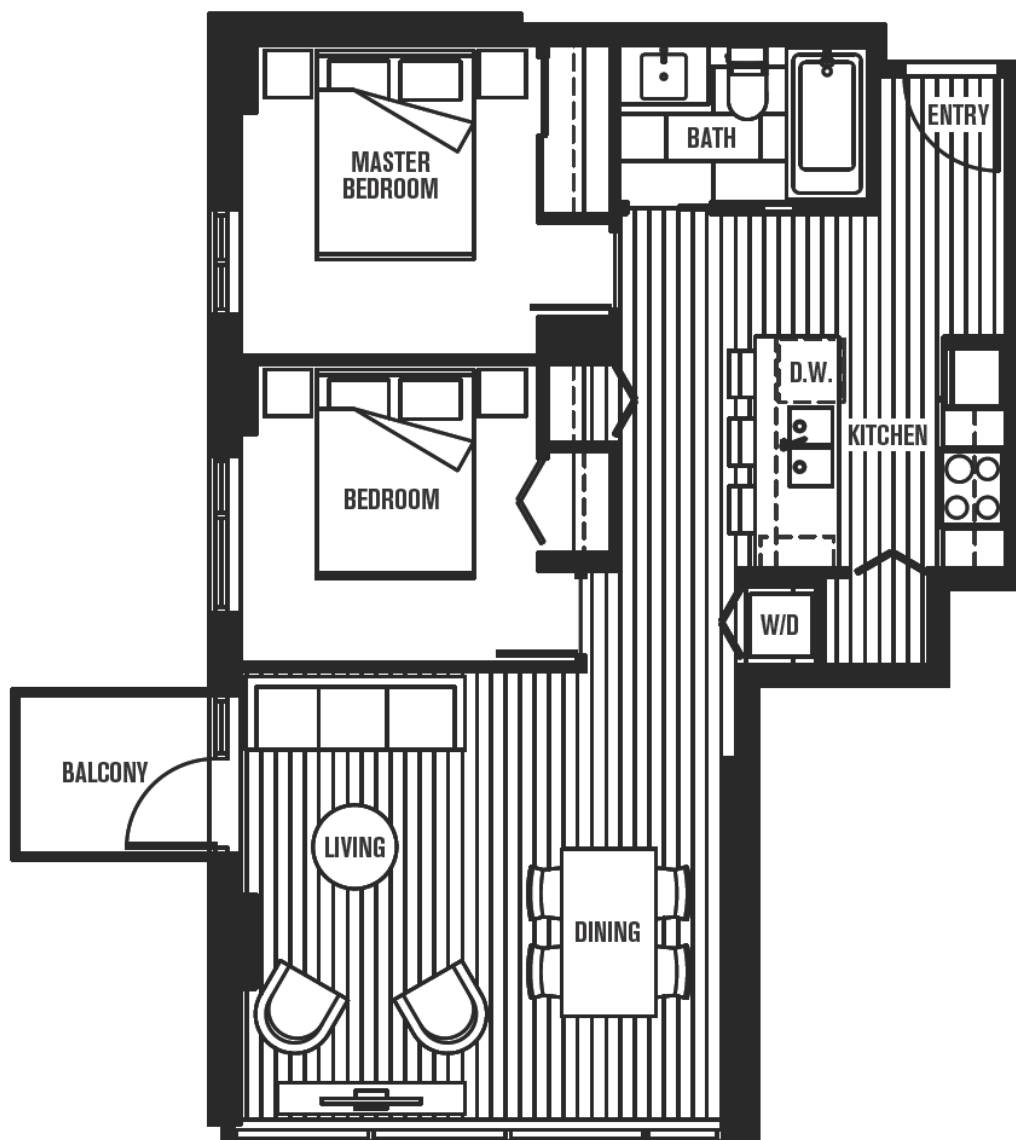
# theRaymur

@ Strathcona Village

## PLAN L3

2 BEDROOM

755 SQ FT



HASTINGS ST.

5TH FLOOR



Dimensions, sizes, areas, specifications, layouts and materials are approximate only and subject to change without notice. E.&O.E.