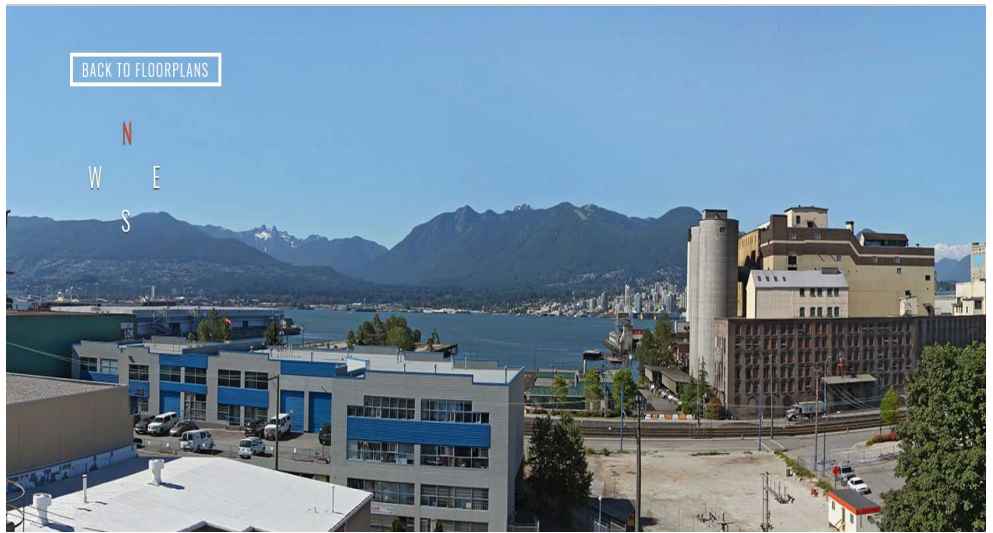


# FOR SALE & for living

STRATHCONA VILLAGE  
#303- 933 E Hastings Street  
Vancouver



## #303 - 933 E Hastings Street, Vancouver

Vancouver is at your doorstep at **THE SOLD OUT** Strathcona Village with Downtown, Gastown, Chinatown, East Village and Commercial Drive within walking distance. This bright North facing 1 bedroom + Flex a fantastic floorplan with plenty of windows, balcony and gorgeous UNOBSTUCTED views of the city/water and Northshore Mountains. Chef's will love the open gourmet kitchen with a stainless steel appliance package and Sonetto double sink. Watch the ships go by on your over sized sundeck off the living room. Relax in the spa like bath with contemporary soaker tub and quartz-composite stone counter vanity. Amenities include landscaped rooftop gardens, meeting rooms and fitness center. Walk to the upcoming 12,000 Strathcona Public library, Commercial Drive, Chinatown, East Village and Downtown. Includes 1 parking stall. Call today for more information on this assignment. This is the ONE!! Estimated Completion Late 2017.

### INFORMATION YOU NEED TO KNOW:

PRICE	\$499,900
ADDRESS	#303 - 933 E Hastings Street
AREA	Strathcona
TYPE	1 Bedroom + Flex + Balcony
BATHS	1
SQ FT	580
STRATA FEES	\$256.48
PARKING	1
STORAGE	Insuite
YEAR BUILT	2017
VIEW	NORTH
PETS	Yes
RENTALS	Yes
ORIGINAL PRICE	\$309,900 (\$30,990 Deposit)
CREDITS	\$3,099

### INFORMATION YOU **want** TO KNOW:



Transit

0.2 km



Nearest Park  
Maclean Park



Schools nearby:  
Admiral Seymour



Coffee shops within 1 km:  
10+



**DEREK KAI** \*PREC

604.868.1666 · dkai@rennie.com

Expertliving.ca

**SUSAN CHOW** \*PREC

604.765.8269 · schow@rennie.com

Expertliving.ca

rennie.com

**RENNIE**  
&  
ASSOCIATES  
REALTY

# Strathcona Village



## FEATURES



### AFFORDABLE HOME OWNERSHIP IN HISTORIC STRATHCONA

DESIGNED TO MEET LEED® SILVER STANDARDS BY VANCOUVER'S OWN GBL ARCHITECTS WITH INNOVATIVE, QUALITY CONSTRUCTION. TWO DELUXE COLOUR SCHEMES BY AWARD-WINNING BYU DESIGN, ONE IN LIGHT WOOD TONES AND ANOTHER IN GLOSSY WHITES WITH CHARCOAL ACCENTS.

#### INSPIRED DESIGN

- The harbour container design of the building's facade with its extensive glazing, colourful metal panels, exterior balconies and amenity spaces was inspired by the neighbouring industrial aesthetic
- Expansive floor-to-ceiling windows let in an abundance of natural light and maximize opportunities to enjoy the spectacular views
- Efficient open layouts and spacious living spaces
- Textured laminate-wood flooring throughout enhances the luxury industrial aesthetic
- Convenient combo USB and electrical outlet plugs in the kitchens
- Water-efficient and eco-friendly landscaping and green roof reduces carbon footprint

#### SLICK KITCHENS

- Customize your cooking and bath space with one of two colour schemes: light wood tones with neutral finishings or glossy whites with charcoal accents
- Stainless steel GE Moffat refrigerator for a seamless culinary experience
- Panasonic Inverter microwave
- Luxurious, durable quartz-composite stone counters and backsplash
- Sleek stainless steel GE electric range
- Stainless steel Frigidaire Gallery dishwasher
- Designer American Standard faucet with pull down feature
- Stainless steel Sonetto double sink
- Under-cabinet pot lighting that makes your entire kitchen sparkle
- Convenient open-style shelving

#### SPA-LIKE BATHROOMS

- Beautiful quartz-composite stone counters
- Deluxe custom vanity with extra storage drawers
- Contemporary soaker tub with sleek and lasting finish
- Stunning glass shower
- Rowan high-efficiency dual-flush toilet by TOTO
- Ultra-modern American Standard water-efficient shower head and faucets
- Chelini under mount rectangular basins
- High-efficiency Whirlpool stacking washer and dryer

#### CONTEMPORARY CONVENIENCES

- Meeting rooms and fully equipped Fitness Centre
- Multiple outdoor landscaped spaces for entertaining, gathering, reading, or relaxing around a stunning patio gas-fire bowl
- Secure underground parking and restricted floor access
- Charging stations for electric vehicles
- Walking distance to restaurants, cafes, bars, breweries, and shopping

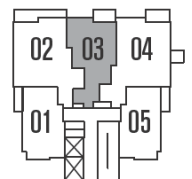
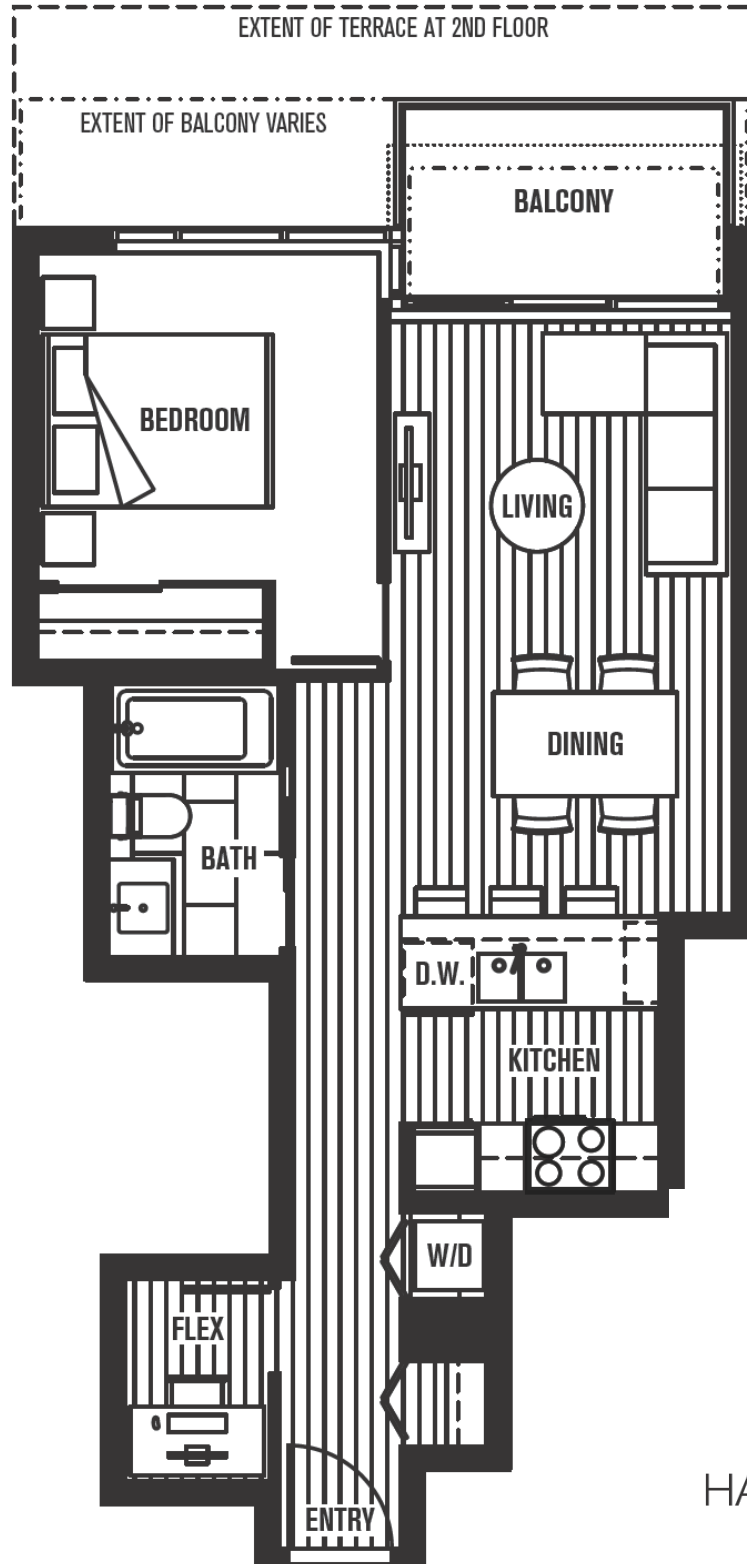
#### UNIQUELY POSITIONED

- Stunning views of the North Shore Mountains, Burrard Inlet, Downtown, and Port Metro Vancouver
- Walking distance to Downtown, Gastown, Chinatown, East Village and Commercial Drive
- The new 12,000 square foot Strathcona Public Library is less than two blocks away
- Easy access to transit, bike paths, the SeaBus, SkyTrain, Canada Line, and Highway 1

#### PROTECTED BY NATIONAL HOME WARRANTY

**PLAN D**

1 BEDROOM + FLEX  
580 SQ FT



HASTINGS ST.

**3RD FLOOR**

