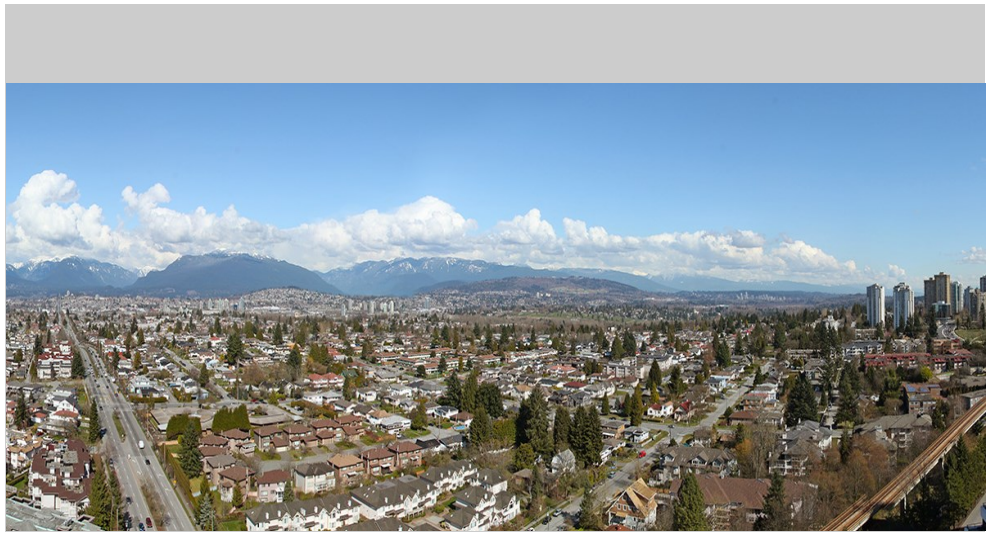


FOR SALE & for living

WALL CENTRE CENTRAL PARK
#3004- 5665 Boundary Road
Vancouver



#3004—5665 Boundary Road Vancouver

We have the neighbourhood. We have the park. We have the views. We have the shopping. We have the transit. ALL THAT'S MISSING IS YOU. Vancouver's now SOLD OUT Wall Centre Central Park. Relax, exercise, work and play - building homes and building balanced lives. Wall Financial does it again. An assortment of 1 and 2 BR homes designed to meet LEED Gold Standards by award-winning gBL Architects featuring floor to ceiling windows, cocoa wood-tone laminate floors, shaker-style cabinetry, quartz/marble counters, and stainless steel appliances (gas range). Amenities include: fitness centre, 60-foot lap pool, hot tub spa, meeting rooms, caretaker and lush garden space. 1 parking included. Assignment of contract. Completion Spring 2017.

INFORMATION YOU NEED TO KNOW:

| | |
|----------------|--|
| PRICE | \$595,000 |
| ADDRESS | #3004—5665 Boundary Road, Vancouver |
| AREA | Collingwood |
| TYPE | 2 Bedroom plus Enclosed Balcony, Flex & Balcony |
| BATHS | 2 |
| SQ FT | 857 |
| STRATA FEES | \$360.79 |
| PARKING | 2 (Additional \$20,000 payable at completion for second) |
| STORAGE | Insuite |
| YEAR BUILT | 2017 |
| VIEW | North East |
| PETS | Yes - 1 Dog or 2 Cats or 1 of each |
| RENTALS | Yes |
| ORIGINAL PRICE | \$475,000 (10% deposit) |
| CREDITS | \$12,500. Dark colour scheme, laminate in bedrooms at no additional cost |

INFORMATION YOU *want* TO KNOW:



Transit

0.0 km



Nearest Park
Central Park

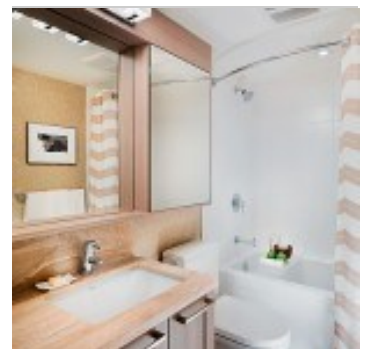
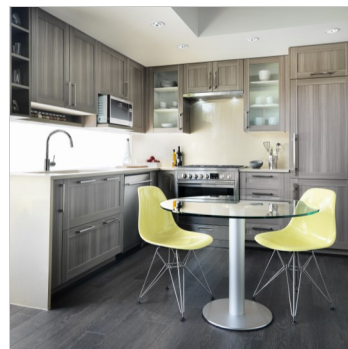
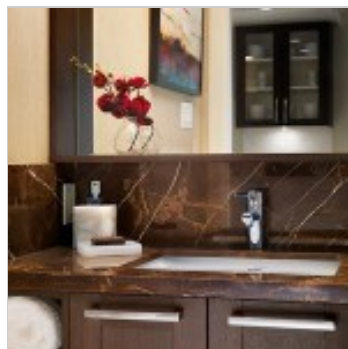
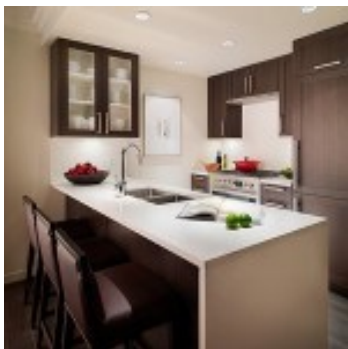


Schools nearby:
Graham D. Bruce
Elementary



Coffee shops within 1 km:

12



DEREK KAI *PREC

604.868.1666 · dkai@rennie.com

Expertliving.ca

SUSAN CHOW *PREC

604.765.8269 · schow@rennie.com

Expertliving.ca

rennie.com

RENNIE
&
ASSOCIATES
REALTY

TRANSIT-ORIENTED MASTER-PLANNED COMMUNITY

DESIGNED TO MEET LEED® GOLD STANDARDS BY VANCOUVER'S OWN GBL ARCHITECTS WITH CONTEMPORARY MODERN GLASS EXTERIORS & QUALITY CONCRETE CONSTRUCTION.

TWO DELUXE COLOUR SCHEMES IN LIGHT AND DARK SELECTED BY AWARD-WINNING BYU DESIGN.

URBAN CHIC

- Striking glass and concrete towers rise above lush, tree-lined streets, restful pathways, garden plots and water features
- Expansive floor-to-ceiling windows increase the flow of natural light
- Stunning city, water and park views to enjoy from your urban home
- Modern and stylish roller blinds that add privacy and sophistication
- Ultra-wide and durable cocoa wood-tone laminate floors throughout living, dining and kitchen areas
- Open layouts with large balconies to maximize light and living space
- Sleek brushed nickel door handles add to the overall allure of elegance
- Nature-inspired loop pile broadloom carpeting, custom designed for maximum comfort and durability

SMART KITCHENS

- Customize your cooking space with two colour schemes: Light and Dark
- Durable shaker style cabinetry in foil wrap wood and glass (above peninsulas) with contemporary brushed nickel handles
- Luxurious polished quartz slab countertops and backsplash
- Custom integrated front paneled Liebherr refrigerator for a seamless culinary experience
- Stainless steel Porter & Charles dishwasher
- Stainless steel Porter & Charles dual-fuel gas range
- Designer Grohe faucet with pull out feature
- Bright halogen recessed pot lighting featuring a contemporary bright chrome fitting that makes your entire kitchen sparkle
- Contemporary square-edged stylish stainless steel double bowl sink
- Convenient countertop overhang for social kitchen dining

BATHROOM OASIS

- Stunning marble stone countertops and backsplash
- Deluxe custom cabinetry with extra storage plus an integrated mirrored medicine cabinet with lighting bar
- European style, frosted glass box vanity lighting fixtures for a soft soothing spa-inspired bathroom
- Extra large format ceramic tiles on floors and walls
- Luxurious soaker bathtub with sleek and lasting finish
- High efficiency toilet by Duravit
- Rectangular Duravit undermount sinks
- Ultra-modern Grohe showerhead and faucets
- Recessed wet-rated halogen potlight at tub and shower

MODERN CONVENIENCES

- Meeting Rooms and fully-equipped Fitness Centres in each tower
- Exclusive Clubhouse for resident use only, features a 60-foot Swimming Pool and Hot Tub, plus a fully-equipped Fitness Facility
- Outdoor landscaped space for entertaining and gathering
- Home to a new annex for the Collingwood Neighbourhood House offering programs including cooking classes, peer support, tai chi/yoga and more
- Green and sustainable, large community gardening plots in designated areas will allow for growing organic produce and encourage residents to maintain composting
- Secured underground parking with a separate gate for residents and visitors
- Across the street from Burnaby's expansive Central Park with opportunities for cycling, walking, trails, picnics, lakeside naps, and more
- 5-minute walk to Joyce SkyTrain Station
- Easy access to Metrotown and Crystal Mall for shopping, dining and socializing
- 5-minute walk to schools, shopping and the Collingwood Neighbourhood House



TOWER 1



BOUNDARY RD. LEVELS 15-30