

# FOR SALE & for living

POMARIA  
#402 - 1455 Howe Street  
Vancouver



## #402 - 1455 Howe Street, Vancouver

*One of a kind, functional 2 Bedroom + Den + Flex unit with LARGE PATIO & a second balcony in the Award Winning Pomaria Building developed by Qualex Landmark. Luxurious finishings featuring European wood cabinets, high end appliances, granite countertops, lots of storage and plenty of outdoor space to top it off. The perfect outlook which is QUIET and SERENE overlooking the landscaped courtyards. This is a LEED certified building with geothermal air-conditioning, 24 hr concierge, gym, yoga rm, steam room & sauna. Pomaria is steps away from seawall, aqua bus to Granville Island & the trendy Yaletown, close to all shopping and world class restaurants. Don't miss out on this opportunity!*

### INFORMATION YOU NEED TO KNOW:

PRICE	\$538,000
ADDRESS	#402 - 1455 Howe Street, Vancouver
AREA	Yaletown
TYPE	2 Bedroom + 2 Balconies
BATHS	1
SQ FT	703
STRATA FEES	\$398.85
PARKING	1 - #185
STORAGE	P2 - 27
YEAR BUILT	2007
VIEW	Northeast
PETS	Yes - 1 Cat or 1 Dog
RENTALS	Yes (Minimum 6 Months)

### INFORMATION YOU *want* TO KNOW:



Transit

0.1 km



Nearest Park

George Wainborn Park



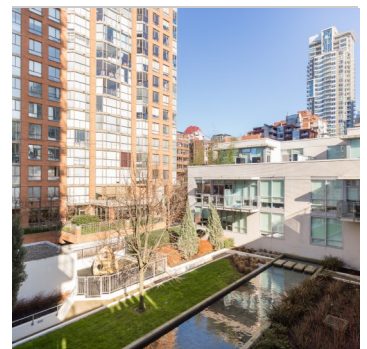
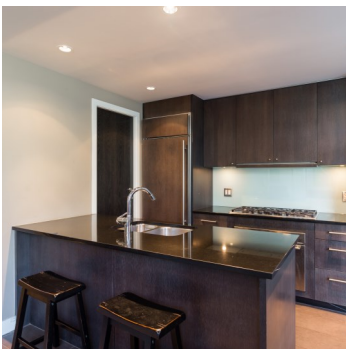
Schools nearby:

Mole Hill Montessori



Coffee shops within 1 km:

25+



**DEREK KAI** \*PREC

604.868.1666 · dkai@rennie.com

Expertliving.ca

**SUSAN CHOW** \*PREC

604.765.8269 · schow@rennie.com

Expertliving.ca

rennie.com

**RENNIE**  
&  
ASSOCIATES  
REALTY