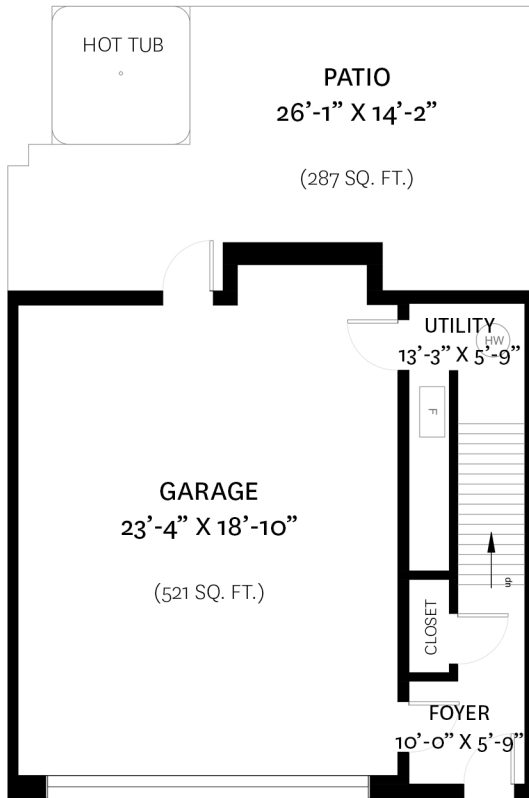


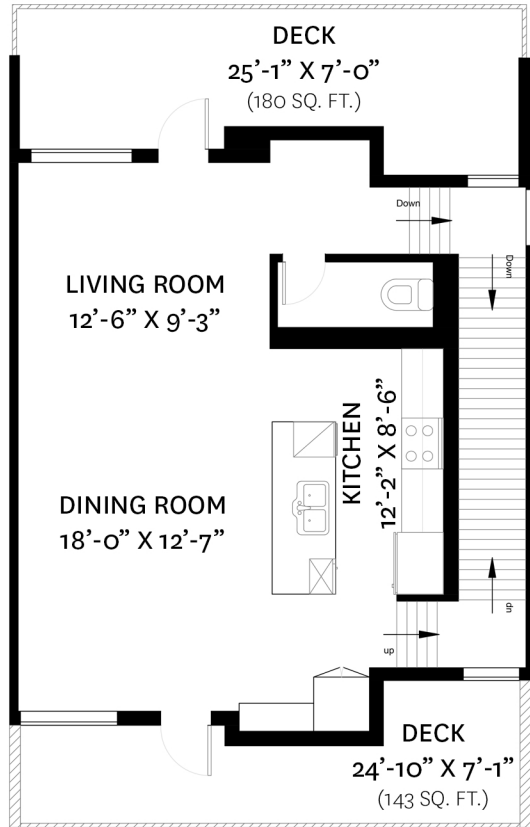
# 22 - 3595 SALAL DRIVE, NORTH VANCOUVER, BC

LOWER FLOOR TOTAL: 156 SQ. FT.  
 MAIN FLOOR TOTAL: 752 SQ. FT.  
 UPPER FLOOR TOTAL: 747 SQ. FT.  
**TOTAL: 1,655 SQ. FT.**

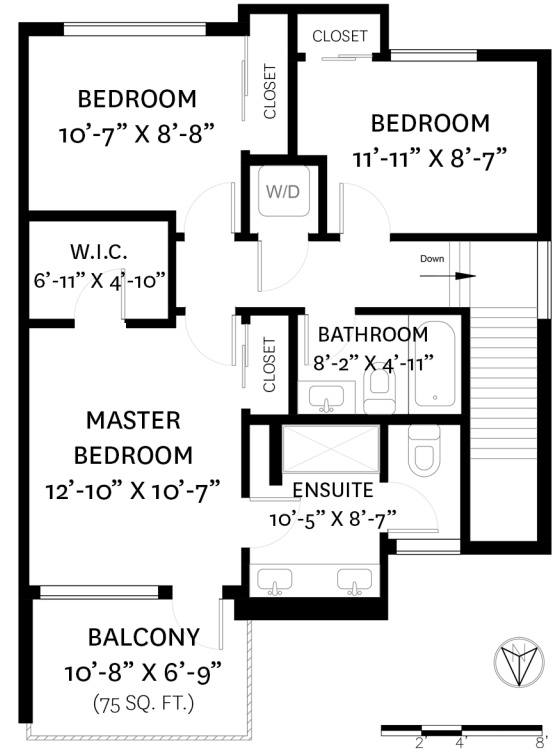
PATIO: 287 SQ. FT.  
 GARAGE: 521 SQ. FT.  
 DECK: 323 SQ. FT.  
 BALCONY: 75 SQ. FT.



**LOWER FLOOR PLAN**  
 Ceiling Height: 8'-3"



**MAIN FLOOR PLAN**  
 Ceiling Height: 8'-11"



**UPPER FLOOR PLAN**  
 Ceiling Height: 9'-0"

floor plan designed by ishot.ca Enterprises Inc.  
 604.368.7979 ishot.ca

**Tracy Lam**  
 778.688.8035  
 tlam@rennie.com  
 rennie.com/tracylam



\*PERSONAL REAL ESTATE CORPORATION. THE FLOOR PLAN ILLUSTRATION IS NOT SUITABLE FOR CONSTRUCTION/ARCHITECTURAL PURPOSES. MEASUREMENTS ARE APPROXIMATE AND MAY NOT BE TO SCALE. E&O INSURED.