

FOR SALE & for living

TRAPP & HOLBROOK
#1901 - 668 Columbia Street
New Westminster



#1901 - 668 Columbia Street, New Westminster

Welcome to the Trapp + Holbrook: New Westminster's newest development in the Historic Downtown District. This brand new UPPER FLOOR bright West facing 1 bedroom home offers SPECTACULAR CITY & WATER VIEWS of the Fraser River high above the surrounding buildings with an incredible wrap around balcony. Highest floor with this great floorplan with overheight ceilings not found on the lower floors! Chefs kitchen with Kitchenaid/Blomberg appliances, quartzite counters & white matte soft close cabinetry. Great open concept floorplan with no wasted space & wide plank laminate flooring throughout. 1st class amenities include fitness facility, lounge, meeting room, outdoor sundeck, fireside lounge, garden plots & lush landscaped gardens. Unbeatable location steps to the waterfront, boutique shops, restaurants & the skytrain station. 1 parking stall included. GST PAID.

INFORMATION YOU NEED TO KNOW:

PRICE	\$349,900
ADDRESS	#1901 - 668 Columbia Street, New Westminster
AREA	Quay
TYPE	1 Bedroom + Balcony
BATHS	1
SQ FT	601
STRATA FEES	\$176.71
PARKING	1 - P6-166
GST INCL	Yes
YEAR BUILT	2015
VIEW	West
PETS	Yes - 2
RENTALS	Yes

INFORMATION YOU **want** TO KNOW:



Transit

0.1 km



Nearest Park
Simcoe Park



Schools nearby:
Douglas College



Coffee shops within 1 km:
15



DEREK KAI *PREC

604.868.1666 · dkai@rennie.com

Expertliving.ca

SUSAN CHOW *PREC

604.765.8269 · schow@rennie.com

Expertliving.ca

rennie.com

RENNIE
&
ASSOCIATES
REALTY

FOR SALE & for living

TRAPP & HOLBROOK
#1901 - 668 Columbia Street
New Westminster



ONE OF THE TALLEST BUILDINGS ON COLUMBIA STREET DURING THE EDWARDIAN ERA, THE TRAPP BLOCK FORMERLY HOUSED A WAREHOUSE AND OFFICES. ADDITIONS IN 1913 OFFERED A STRIKING NEW FACADE WITH UNIQUE WINDOWS AND HANDSOME TERRA COTTA TILES. THE ADJACENT HOLBROOK BUILDING, A HOTEL AND SALOON, WAS CONSTRUCTED IN THE 1880S AND REBUILT IN BRICK, AFTER THE GREAT FIRE OF 1898. TODAY, THE TRAPP AND HOLBROOK BLOCKS REMAIN AS MUCH OF A LANDMARK IN THE FABRIC OF NEW WESTMINSTER'S HISTORIC DISTRICT TODAY AS THEY DID OVER 100 YEARS AGO.

BUILDING FEATURES

- Carefully reconstructed building facade from the original Trapp and Holbrook Blocks in 1913
- Panoramic Fraser River views from most suites, starting from the 5th floor and up
- Indoor/Outdoor shared amenity space on the 5th floor, featuring:
 - Fully-equipped fitness facility
 - Club lounge/games room for entertaining and celebrating
 - Raised, river-view sun deck
 - Outdoor BBQ and dining area
 - Fireside lounge seating area
 - Community garden plots
 - Lush landscaped garden terrace
- Enterphone video surveillance at entry, and secured floor access via key-fob
- Key-fob secured access to parkade and storage locker room for residents
- New concrete construction protected by 2-5-10 Travelers Home Warranty

INTERIOR SPECIFICATIONS

Living Areas

- Inspired interior design by Cristina Oberti Interior Design Inc.
- Thoughtfully-planned, efficient interiors which maximize usability of living and storage spaces
- Option of two interior color palettes
- Engineered wide-plank laminate flooring throughout
- High quality loop carpeting in bedrooms
- Front-loading stacked washer/dryer
- Floor-to-ceiling window glazing with sleek roller blinds
- Generously-sized balconies to enjoy water and city views

Kitchens

- Soft-close cabinetry in walnut wood grain laminate or frosty white matte finish with chrome pulls
- 1 1/4" quartzite countertops with glass mosaic tiled backsplash
- Undermount stainless steel rectangular sink, extra large single-bowl
- Delta Trinsic single-lever chrome faucet with pull-down spray
- Designer appliance package including:
 - Blomberg bottom-freezer refrigerator, built-in with integrated cabinet door panels
 - KitchenAid Architect Series II convection wall oven
 - KitchenAid Architect Series II ceramic glass cooktop
 - KitchenAid Specialty Series slide-out hood fan
 - KitchenAid Classic Series integrated console dishwasher
 - KitchenAid Architect Series II built-in microwave with trim kit

Baths

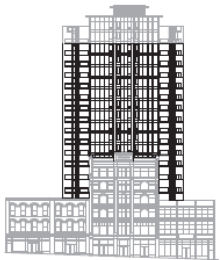
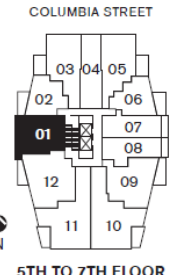
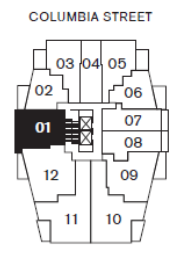
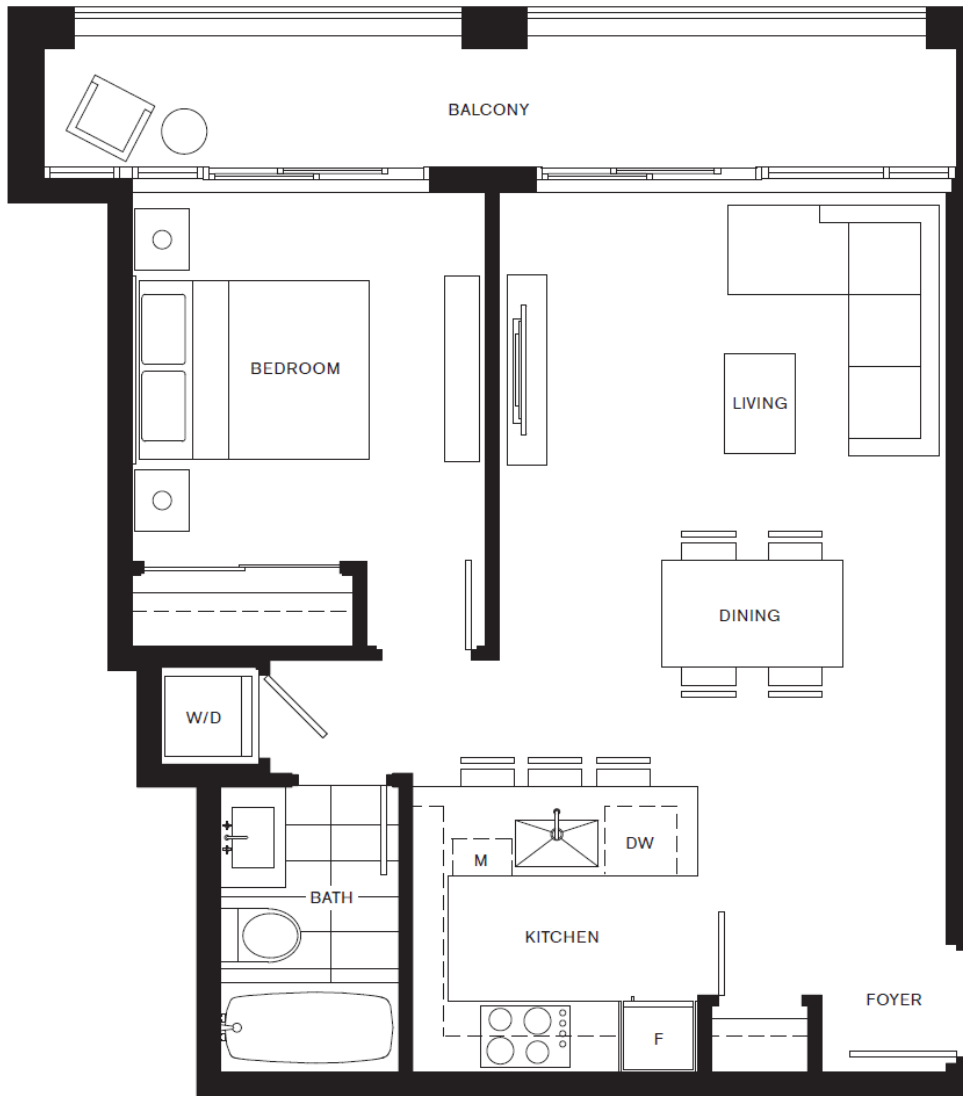
- Designer porcelain tiled floors, tub and shower surround
- Cabinetry in walnut wood grain laminate or frosty white matte finish with chrome pulls
- Delta Vero single lever chrome faucet
- Delta Vero tub filler, shower head and trim
- Dual-flush water-saving toilets with elongated bowl and soft-close seat
- Polished chrome bath accessories
- 1 1/4" quartzite countertops with 6" matching backsplash and rectangular undermount basin (ensuites)
- Semi-frameless glass-enclosed showers (ensuites)
- Acri-tec Zen integrated acrylic basin and countertop (main baths)
- Deep soaker tub with ergonomic back incline and integrated arm rests (main baths)

D

1 BED

TRAPP + HOLBROOK

MODERN LIVING IN HISTORIC NEW WESTMINSTER



TOWER SUITES
LEVELS 5 - 19



Dimensions, sizes, specifications, layouts and materials are approximate only and subject to change without notice. Floor plates may vary. Please see a sales representative for more details. E.&O.E.