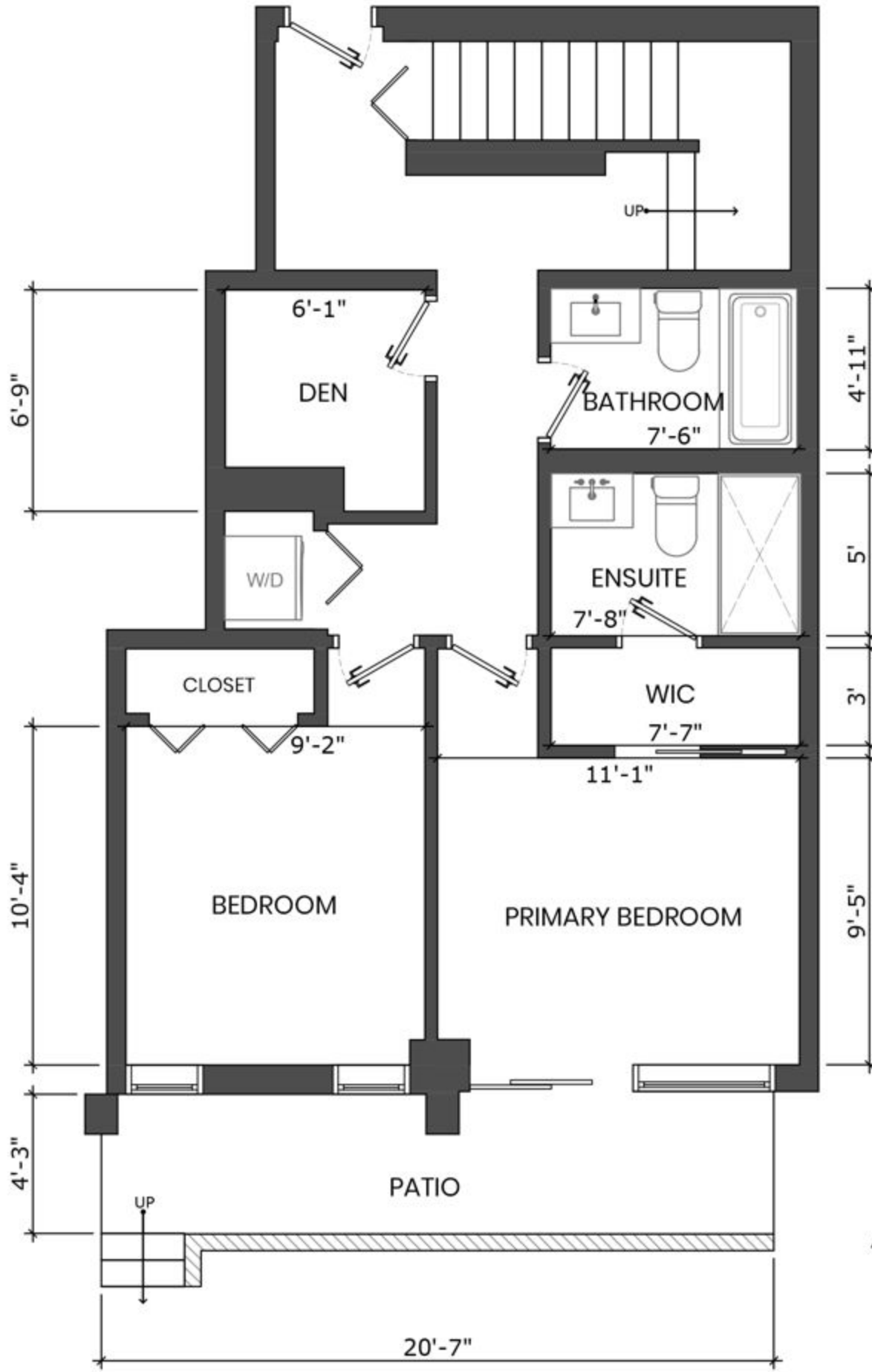


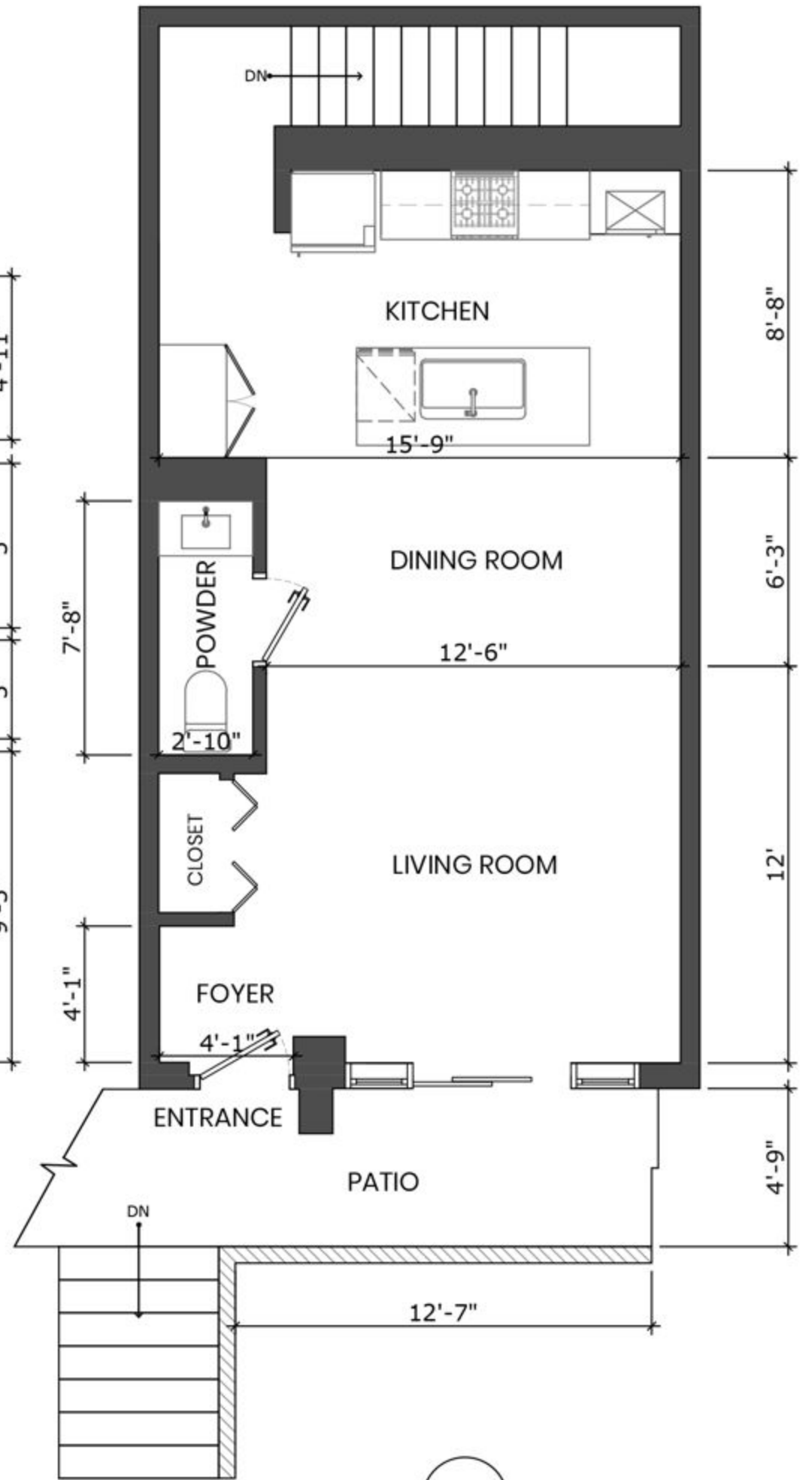
1782 WEST 6TH AVENUE, VANCOUVER, BC

LOWER FLOOR TOTAL: 650 SQ.FT.
 MAIN FLOOR TOTAL: 548 SQ.FT.
TOTAL: 1,198 SQ.FT.
 PATIO TOTAL: 162 SQ.FT.

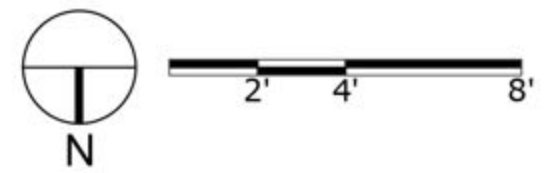
*DISCLAIMER: STRATA PLAN SHOWS 1,196 SQ.FT.



LOWER FLOOR PLAN
 Ceiling Height: 8'-2"



MAIN FLOOR PLAN
 Ceiling Height: 8'-5"



Derek Kai PREC*
 604.868.1666
 dkai@rennie.com
 expertliving.ca

rennie

*PERSONAL REAL ESTATE CORPORATION. THE FLOOR PLAN ILLUSTRATION IS NOT SUITABLE FOR CONSTRUCTION/ ARCHITECTURAL PURPOSES. MEASUREMENTS ARE APPROXIMATE AND MAY NOT BE TO SCALE. E&O INSURED. FLOOR PLAN DESIGNED BY ISHOT.CA ENTERPRISES INC. 604-368-7979 ISHOT.CA