

FOR SALE & for living

MANDARIN RESIDENCES
#1506 - 6188 No. 3 Road
Richmond



#1506 - 6188 No. 3 Road, Richmond

Mandarin Residences in Richmond City Centre - Never Lived In/New Upper Level North facing home featuring beautiful mountain & city views with direct access to Richmond-Brighouse skytrain Station at your doorstep. Perfectly laid out 2 bedroom + 2 bath + balcony home. Bedrooms are separated & both have access to their own beautifully designed ensuite. Bonus: Master has a big walk in closet & double vanity ensuite! Classic elegance inspired by global luxury hotels designed to meet LEED Silver with engineered laminate wood floors, Porter & Charles stainless steel appliances (gas range) + Fisher/Paykel fridge. Amenities include: fitness centre, clubhouse, caretaker & rooftop terrace w/garden plots. All that's missing is you! 1 parking included.

INFORMATION YOU NEED TO KNOW:

PRICE	\$829,900
ADDRESS	#1506 - 6188 No. 3 Road
AREA	Brighouse
TYPE	2 Bedroom
BATHS	2
SQ FT	869
STRATA FEES	\$299.60
PARKING	1 - #317
STORAGE	Insuite
YEAR BUILT	2016
VIEW	North
PETS	Yes - 2 Pets Total
RENTALS	No Restrictions

INFORMATION YOU *want* TO KNOW:



Transit

0.1 km



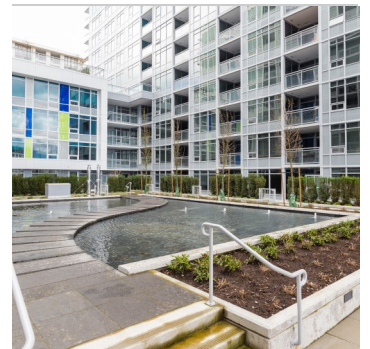
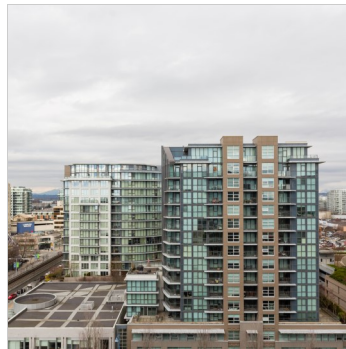
Nearest Park
Minoru Park



Schools nearby:
Cook Elementary
& MacNeil Secondary



Coffee shops within 1 km:
10+



DEREK KAI *PREC

604.868.1666 · dkai@rennie.com

Expertliving.ca

SUSAN CHOW *PREC

604.765.8269 · schow@rennie.com

Expertliving.ca

rennie.com

RENNIE
&
ASSOCIATES
REALTY

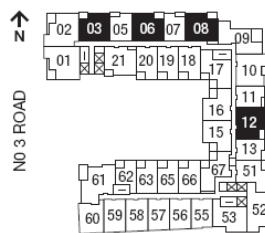
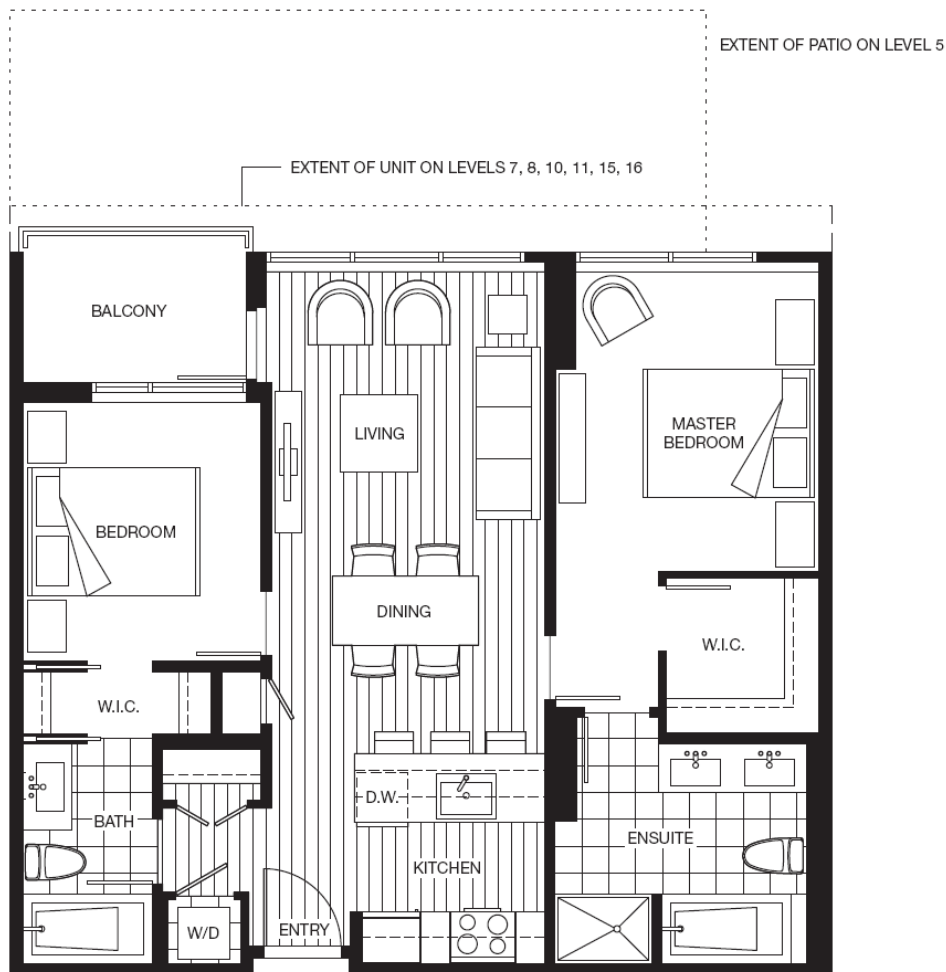
MANDARIN RESIDENCES

RICHMOND CITY CENTRE

PLAN B1

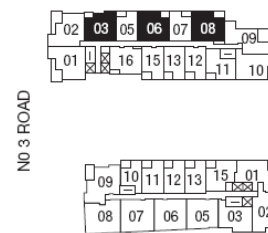
2 Bedroom

814-888 sf



LEVEL 6

Also available on levels 5, 7-9, 11-18



LEVEL 10



Dimensions, sizes, specifications, layouts and materials are approximate only and subject to change without notice. Floor plates may vary. Please see a sales representative for more details. E.&O.E.