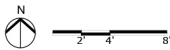
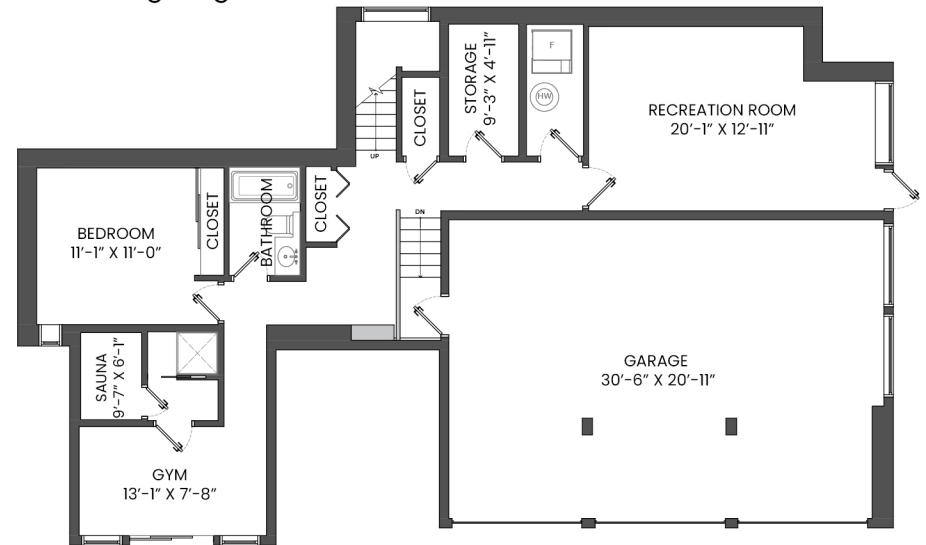
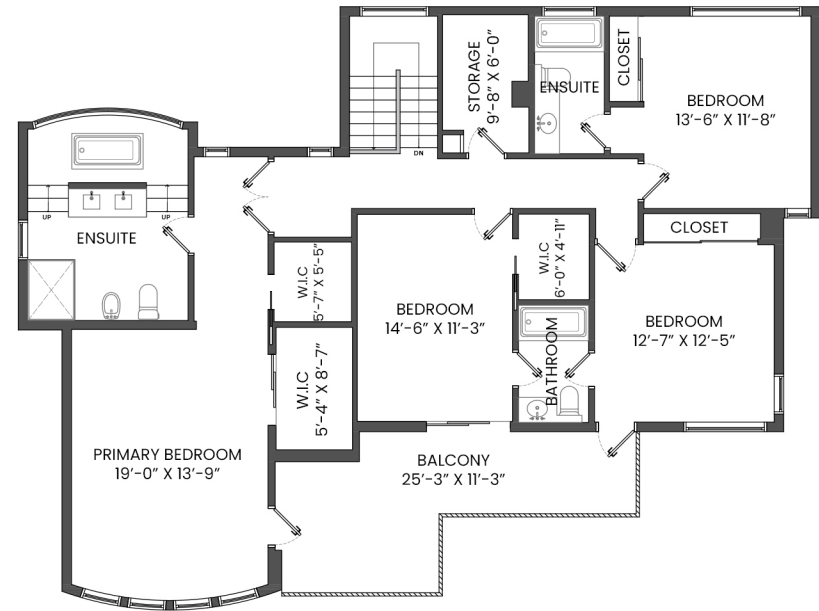
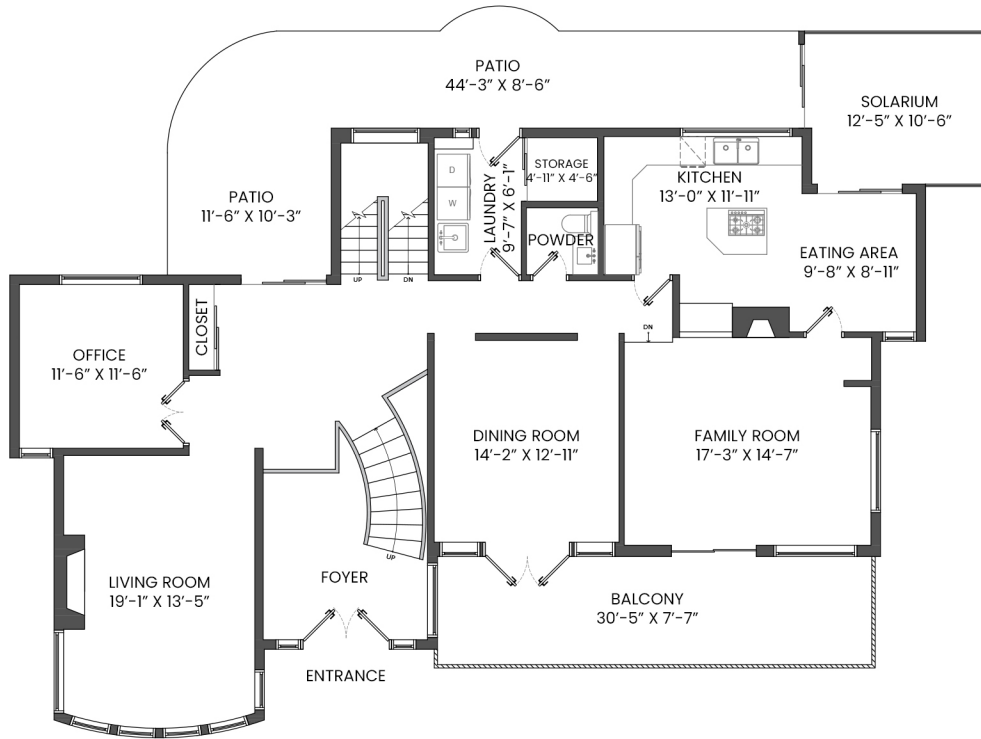


1411 CHIPPENDALE ROAD, WEST VANCOUVER, BC

LOWER FLOOR TOTAL: 1,145 SQ.FT. GARAGE: 681 SQ. FT.
 MAIN FLOOR TOTAL: 1,996 SQ.FT. BALCONY: 425 SQ. FT.
 UPPER FLOOR TOTAL: 1,615 SQ.FT. PATIO: 414 SQ. FT.
TOTAL: 4,756 SQ.FT.



Salina Kai PREC*

604.773.7013

skai@rennie.com

rennie.com/salinakai

Derek Kai PREC*

604.868.1666

dkai@rennie.com

expertliving.ca

rennie

ISHOT

* PERSONAL REAL ESTATE CORPORATION. THE FLOOR PLAN ILLUSTRATION IS NOT SUITABLE FOR CONSTRUCTION/ ARCHITECTURAL PURPOSES. MEASUREMENTS ARE APPROXIMATE AND MAY NOT BE TO SCALE. E&O INSURED.
 FLOOR PLAN DESIGNED BY ISHOT.CA ENTERPRISES INC. 604-368-7979 ISHOT.CA