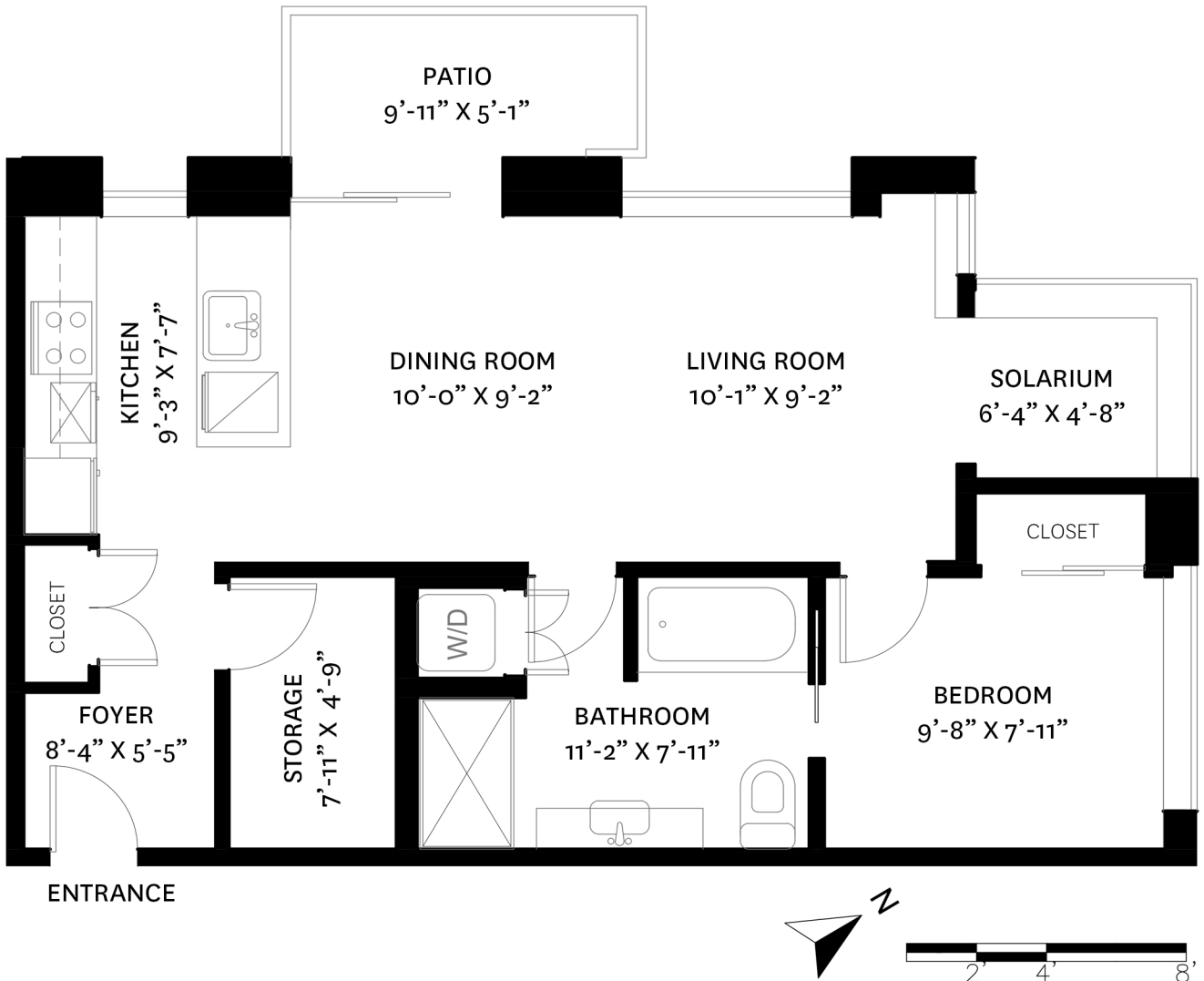


1101 - 1205 HOWE STREET, VANCOUVER, BC

MAIN FLOOR TOTAL: 664 SQ. FT.
PATIO: 47 SQ. FT.



MAIN FLOOR PLAN
Ceiling Height: 9'-11"

floor plan designed by ishot.ca Enterprises Inc.
604.368.7979 ishot.ca

Derek Kai PREC*
604.868.1666
dkai@rennie.com
expertliving.ca



*PERSONAL REAL ESTATE CORPORATION. THE FLOOR PLAN ILLUSTRATION IS NOT SUITABLE FOR CONSTRUCTION/ARCHITECTURAL PURPOSES.
MEASUREMENTS ARE APPROXIMATE AND MAY NOT BE TO SCALE. E&O INSURED.