

1008 - 159 W 2nd Avenue, Vancouver

\$808,000



Welcome to TOWER GREEN by Executive Group! Southwest CORNER 2 BEDROOM + HOME OFFICE offering separated bedrooms, plenty of windows, over height ceilings, spacious open living area & gorgeous unobstructed open city views! Gourmet chef's kitchen includes stainless steel appliances, imported quartz counter tops with breakfast bar. First class amenities include visitor parking, meeting room, exercise gym, outdoor patios with garden plots, party room, tv room & more! One underground parking stall & BONUS storage locker included! CONVENIENTLY LOCATED on the WEST SIDE of the Olympic Village just steps from restaurants, shops & seawall. Transit outside your door with direct UBC access Canada line/skytrain just minutes away. Unit is in perfect condition and move in ready!

KEY INFORMATION

Address: #1008 - 159 W 2ND Avenue, Vancouver
PRICE: \$808,000

AREA: VANCOUVER WEST - False Creek

TYPE: 2 Bedroom + 1 Bathroom + Office

Square Feet: 730

YEAR BUILT: 2018

FEATURES

STRATA FEES: \$345.63

VIEWS: South - Unobstructed City Views

PARKING: 1 (#141)

STORAGE: 1 (Rm10-250)

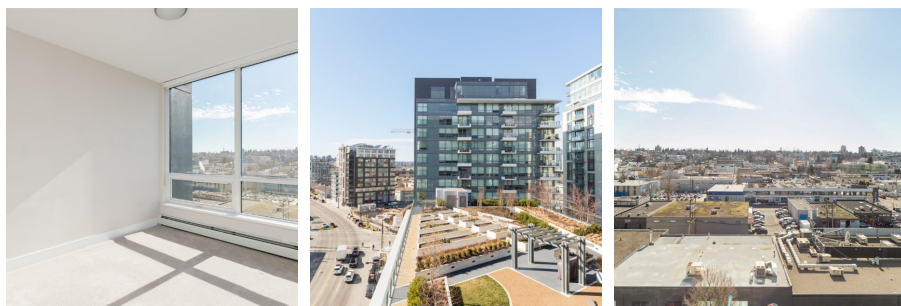
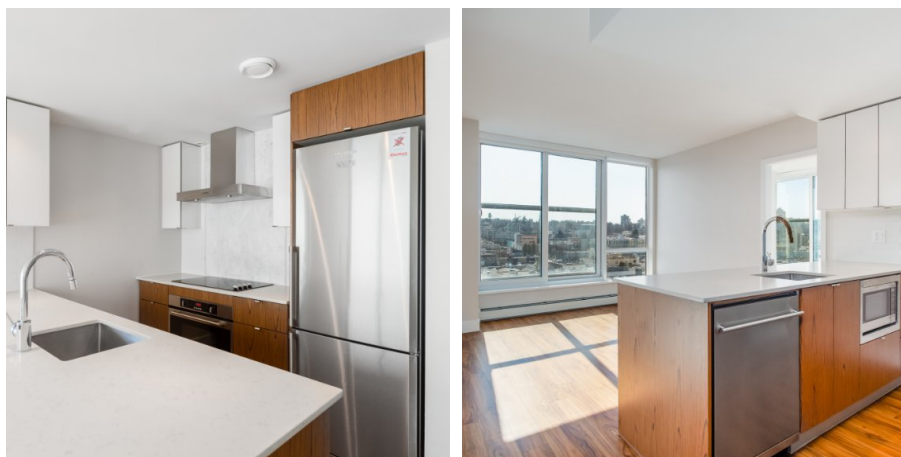
PETS: 2 Dogs or 2 Cats

RENTALS: No Restrictions

MLS: R2347805

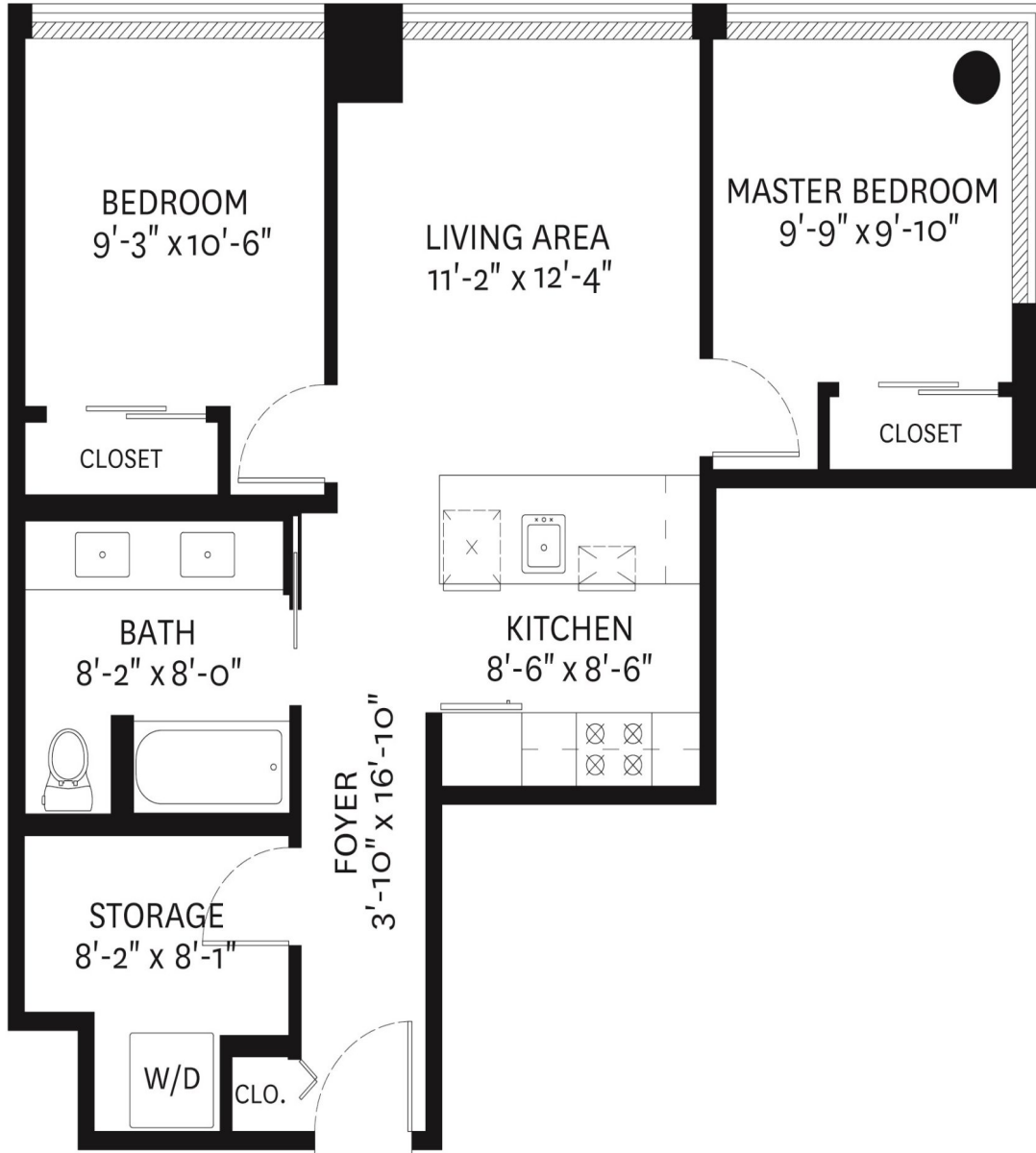
ELEMENTARY SCHOOL: Simon Fraser Elementary

HIGHSCHOOL: Eric Hamber Secondary



Derek Kai PREC*
604.868.1666
dkai@rennie.com
rennie.com/derekkai

rennie



FLOOR PLAN
 Ceiling Height: 8'-4"

Finished Area: 730 SQ. FT.



floor plan designed by ishot.ca Enterprises Inc.
 604.368.7979 ishot.ca

Derek Kai PREC*
 604.868.1666
 dkai@rennie.com
 rennie.com/derekkai

*PERSONAL REAL ESTATE CORPORATION. THE FLOOR PLAN ILLUSTRATION IS NOT SUITABLE FOR CONSTRUCTION/ARCHITECTURAL PURPOSES.
 MEASUREMENTS ARE APPROXIMATE AND MAY NOT BE TO SCALE. E&O INSURED.

rennie