

FOR SALE & for living

WALL CENTRE CENTRAL PARK
#1006 – 5665 Boundary Road
Vancouver



#1006 - 5665 Boundary Road Vancouver

Welcome to Wall Centre Central Park, BRAND NEW ONE OF A KIND HOME with PANORAMIC UNOBSTRUCTURED VIEWS & HUGE PATIO. Perfectly laid out 2 bedroom +2 Bathroom home. Bedrooms are Separated and the Kitchen opens up to the Living/Dining Area. Enjoy your Views from inside your home or your ALMOST 500 SF of outdoor Living. Designed to meet LEED Gold Standards by award-winning GBL Architects featuring floor to ceiling windows, cocoa wood-tone laminate floors, shaker-style cabinetry, quartz/marble counters, and stainless steel appliances (gas range). World Class Amenities includes: fitness centre, 60-foot lap pool, hot tub spa, meeting rooms, caretaker and lush garden space. With the neighbourhood, park, views, patio, shopping & Transit, ALL THAT'S MISSING IS YOU! BONUS: GST PAID, 1 parking included and 1 storage locker included too!

INFORMATION YOU NEED TO KNOW:

PRICE	\$649,900
ADDRESS	#1006 - 5665 Boundary Road, Vancouver
AREA	Collingwood
TYPE	2 Bedroom plus huge patio
BATHS	2
SQ FT	721 sf insuite + 475 sf patio
STRATA FEES	\$308.46
PARKING	P5 - 239
STORAGE	P3-05-12
YEAR BUILT	2017
VIEW	West
PETS	Yes - 1 Dog or 2 Cats or 1 of each
RENTALS	Yes

INFORMATION YOU *want* TO KNOW:



Transit

0.0 km



Nearest Park
Central Park

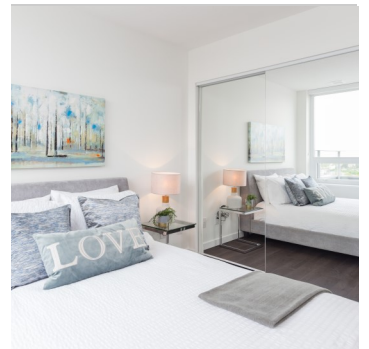
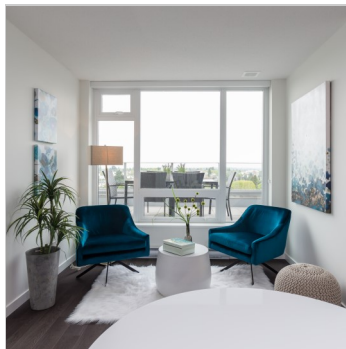


Schools nearby:
Graham D. Bruce
Elementary



Coffee shops within 1 km:

12



DEREK KAI *PREC

604.868.1666 · dkai@rennie.com

Expertliving.ca

SUSAN CHOW *PREC

604.765.8269 · schow@rennie.com

Expertliving.ca

rennie.com

RENNIE
&
ASSOCIATES
REALTY

TRANSIT-ORIENTED MASTER-PLANNED COMMUNITY

DESIGNED TO MEET LEED® GOLD STANDARDS BY VANCOUVER'S OWN GBL ARCHITECTS WITH CONTEMPORARY MODERN GLASS EXTERIORS & QUALITY CONCRETE CONSTRUCTION.

TWO DELUXE COLOUR SCHEMES IN LIGHT AND DARK SELECTED BY AWARD-WINNING BYU DESIGN.

URBAN CHIC

- Striking glass and concrete towers rise above lush, tree-lined streets, restful pathways, garden plots and water features
- Expansive floor-to-ceiling windows increase the flow of natural light
- Stunning city, water and park views to enjoy from your urban home
- Modern and stylish roller blinds that add privacy and sophistication
- Ultra-wide and durable cocoa wood-tone laminate floors throughout living, dining and kitchen areas
- Open layouts with large balconies to maximize light and living space
- Sleek brushed nickel door handles add to the overall allure of elegance
- Nature-inspired loop pile broadloom carpeting, custom designed for maximum comfort and durability

SMART KITCHENS

- Customize your cooking space with two colour schemes: Light and Dark
- Durable shaker style cabinetry in foil wrap wood and glass (above peninsulas) with contemporary brushed nickel handles
- Luxurious polished quartz slab countertops and backsplash
- Custom integrated front paneled Liebherr refrigerator for a seamless culinary experience
- Stainless steel Porter & Charles dishwasher
- Stainless steel Porter & Charles dual-fuel gas range
- Designer Grohe faucet with pull out feature
- Bright halogen recessed pot lighting featuring a contemporary bright chrome fitting that makes your entire kitchen sparkle
- Contemporary square-edged stylish stainless steel double bowl sink
- Convenient countertop overhang for social kitchen dining

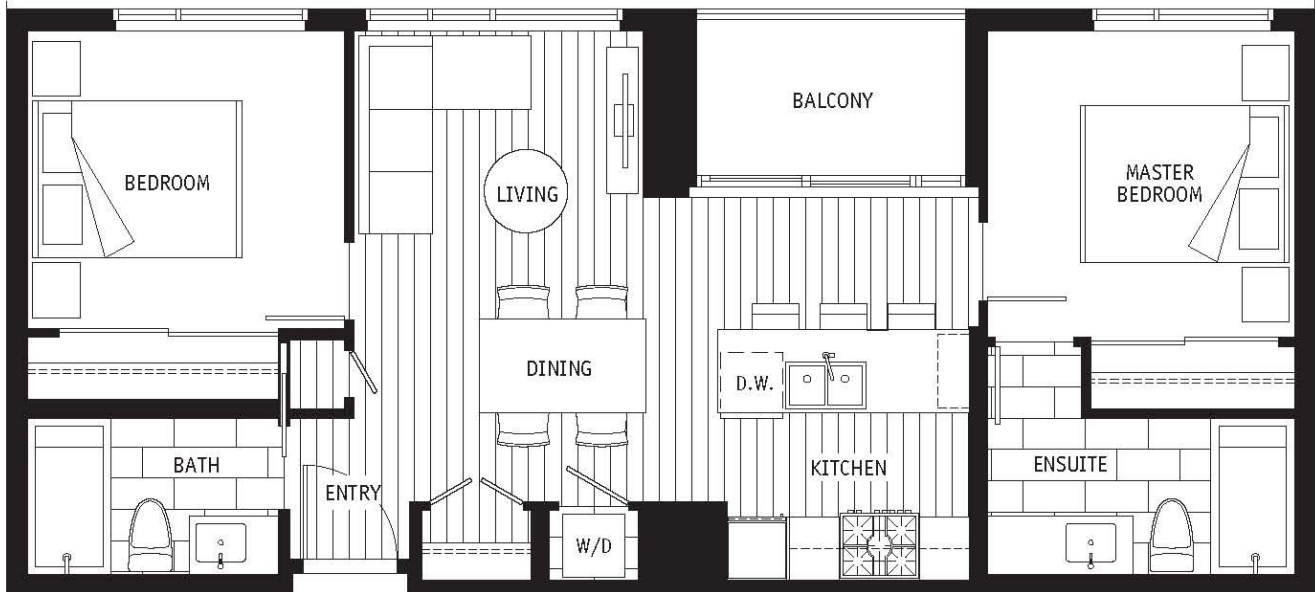
BATHROOM OASIS

- Stunning marble stone countertops and backsplash
- Deluxe custom cabinetry with extra storage plus an integrated mirrored medicine cabinet with lighting bar
- European style, frosted glass box vanity lighting fixtures for a soft soothing spa-inspired bathroom
- Extra large format ceramic tiles on floors and walls
- Luxurious soaker bathtub with sleek and lasting finish
- High efficiency toilet by Duravit
- Rectangular Duravit undermount sinks
- Ultra-modern Grohe showerhead and faucets
- Recessed wet-rated halogen potlight at tub and shower

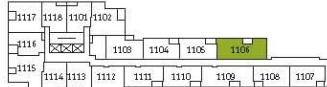
MODERN CONVENIENCES

- Meeting Rooms and fully-equipped Fitness Centres in each tower
- Exclusive Clubhouse for resident use only, features a 60-foot Swimming Pool and Hot Tub, plus a fully-equipped Fitness Facility
- Outdoor landscaped space for entertaining and gathering
- Home to a new annex for the Collingwood Neighbourhood House offering programs including cooking classes, peer support, tai chi/yoga and more
- Green and sustainable, large community gardening plots in designated areas will allow for growing organic produce and encourage residents to maintain composting
- Secured underground parking with a separate gate for residents and visitors
- Across the street from Burnaby's expansive Central Park with opportunities for cycling, walking, trails, picnics, lakeside naps, and more
- 5-minute walk to Joyce SkyTrain Station
- Easy access to Metrotown and Crystal Mall for shopping, dining and socializing
- 5-minute walk to schools, shopping and the Collingwood Neighbourhood House

EXTENT OF TERRACE AT LEVEL 10



TOWER 1



BOUNDARY RD.

LEVEL 11
Also on level 10