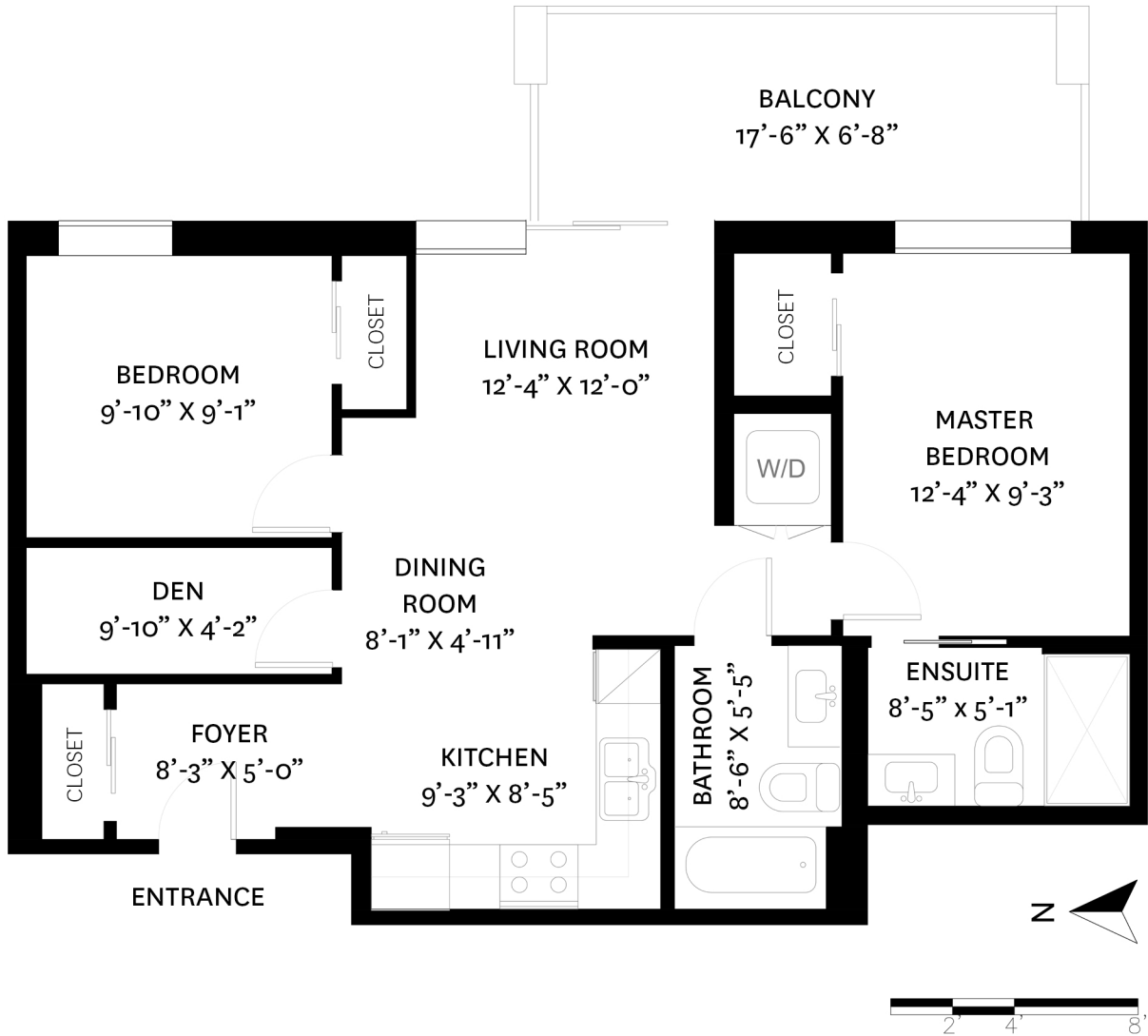


1004 - 3581 EAST KENT AVENUE, NORTH VANCOUVER, BC

MAIN FLOOR TOTAL: 783 SQ. FT.
BALCONY: 115 SQ. FT.



MAIN FLOOR PLAN
Ceiling Height: 8'-11"

floor plan designed by ishot.ca Enterprises Inc.
604.368.7979 ishot.ca

Derek Kai PREC*
604.868.1666
dkai@rennie.com
expertliving.ca

rennie

*PERSONAL REAL ESTATE CORPORATION. THE FLOOR PLAN ILLUSTRATION IS NOT SUITABLE FOR CONSTRUCTION/ARCHITECTURAL PURPOSES.
MEASUREMENTS ARE APPROXIMATE AND MAY NOT BE TO SCALE. E&O INSURED.